

## Anti-SLC22A1 antibody (296-484 aa) [8C1A3] (STJ98406)

STJ98406

### GENERAL INFORMATION

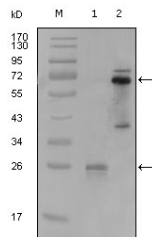
<b>Product Type</b>	Primary antibodies
<b>Short Description</b>	Mouse monoclonal antibody anti-Solute carrier family 22 member 1 (296-484 aa) is suitable for use in Western Blot and ELISA research applications.
<b>Applications</b>	WB/ELISA
<b>Host/Source</b>	Mouse
<b>Reactivity</b>	Human

### PRODUCT PROPERTIES

<b>Clonality</b>	Monoclonal
<b>Clone ID</b>	8C1A3
<b>Concentration</b>	
<b>Conjugation</b>	Unconjugated
<b>Purification</b>	Affinity purification
<b>Dilution Range</b>	WB 1:500-1:2000 ELISA 1:10000
<b>Formulation</b>	Liquid in PBS containing 0.03% Sodium Azide, 0.5% BSA, 50% Glycerol.
<b>Isotype</b>	IgG1
<b>Storage</b>	Store at -20°C for up to 1 year from the date of receipt, and avoid repeat freeze-thaw cycles.
<b>Instruction</b>	

### TARGET INFORMATION

<b>Gene ID</b>	6580
<b>Gene Symbol</b>	SLC22A1
<b>Uniprot ID</b>	S22A1_HUMAN
<b>Immunogen</b>	Purified recombinant fragment of SYK (aa296-484) expressed in E. Coli.
<b>Immunogen Region</b>	296-484 aa
<b>Specificity</b>	SYK Monoclonal Antibody detects endogenous levels of SYK protein.
<b>Immunogen Sequence</b>	



Western blot analysis using SYK monoclonal antibody against truncated SYK-His recombinant protein (1) and PMA induced THP-1 cell lysate (2).