

Anti-SMN1/SMN2 antibody [5H1] (STJ98390)

STJ98390

GENERAL INFORMATION

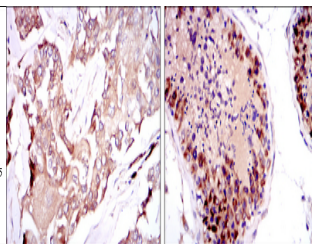
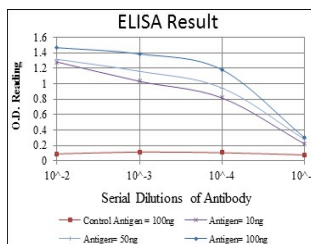
Product Type	Primary antibodies
Short Description	Mouse monoclonal antibody anti-Survival motor neuron protein is suitable for use in Western Blot, Immunohistochemistry, Immunofluorescence and ELISA research applications.
Applications	WB/IHC/IF/ELISA
Host/Source	Mouse
Reactivity	Human/Monkey

PRODUCT PROPERTIES

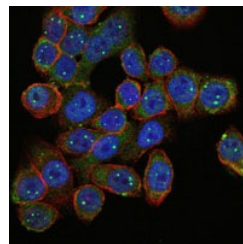
Clonality	Monoclonal
Clone ID	5H1
Concentration	
Conjugation	Unconjugated
Purification	Affinity purification
Dilution Range	WB 1:500-1:2000 IHC 1:200-1:1000 IF 1:200-1:1000 ELISA 1:10000
Formulation	Liquid in PBS containing 0.03% Sodium Azide, 0.5% BSA, 50% Glycerol.
Isotype	IgG1
Storage Instruction	Store at -20°C for up to 1 year from the date of receipt, and avoid repeat freeze-thaw cycles.

TARGET INFORMATION

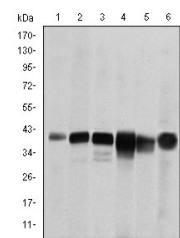
Gene ID	6606/6607
Gene Symbol	SMN1.SMN2
Uniprot ID	SMN_HUMAN
Immunogen	Purified recombinant fragment of human SMN1 expressed in E. Coli.
Immunogen Region	
Specificity	SMN1 Monoclonal Antibody detects endogenous levels of SMN1 protein.
Immunogen Sequence	



Immunohistochemistry analysis of paraffin-embedded breast cancer tissues (left) and testis tissues (right) with DAB staining using SMN1 monoclonal antibody.



Immunofluorescence analysis of HepG2 cells using SMN1 monoclonal antibody (green). Blue: DRAQ5 fluorescent DNA dye. Red: Actin filaments have been labeled with Alexa Fluor-555 phalloidin.



Western blot analysis using SMN1 monoclonal antibody against RAJ1 (1), Cos7 (2), Jurkat (3), K562 (4), HeLa (5) and HepG2 (6) cell lysate.

This product is suitable for in-vitro studies under the RESEARCH USE ONLY [RUO] licence. This product must not be used as for diagnostic or other medical purposes.
St John's Laboratory Ltd, Knowledge Dock Business Centre, University Way, London, E16 2RD | Tel: 0208 223 3081