

Anti-SKP2 antibody (1-130 aa) [6G9D10] (STJ98381)

STJ98381

GENERAL INFORMATION

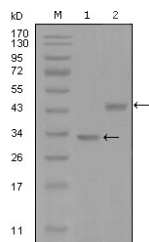
Product Type	Primary antibodies
Short Description	Mouse monoclonal antibody anti-S-phase kinase-associated protein 2 (1-130 aa) is suitable for use in Western Blot and ELISA research applications.
Applications	WB/ELISA
Host/Source	Mouse
Reactivity	Human

PRODUCT PROPERTIES

Clonality	Monoclonal
Clone ID	6G9D10
Concentration	
Conjugation	Unconjugated
Purification	Affinity purification
Dilution Range	WB 1:500-1:2000 ELISA 1:10000
Formulation	Liquid in PBS containing 0.03% Sodium Azide, 0.5% BSA, 50% Glycerol.
Isotype	IgG1
Storage	Store at -20°C for up to 1 year from the date of receipt, and avoid repeat freeze-thaw cycles.
Instruction	

TARGET INFORMATION

Gene ID	6502
Gene Symbol	SKP2
Uniprot ID	SKP2_HUMAN
Immunogen	Purified recombinant fragment of Skp2 p45 (aa1-130) expressed in E. Coli.
Immunogen Region	1-130 aa
Specificity	Skp2 p45 Monoclonal Antibody detects endogenous levels of Skp2 p45 protein.
Immunogen Sequence	



Western blot analysis using Skp2 p45 monoclonal antibody against truncated Trx-Skp2 p45 recombinant protein (1) and GST-Skp2 p45 (aa1-130) recombinant protein (2).

This product is suitable for in-vitro studies under the RESEARCH USE ONLY [RUO] licence. This product must not be used as for diagnostic or other medical purposes.
St John's Laboratory Ltd, Knowledge Dock Business Centre, University Way, London, E16 2RD | Tel: 0208 223 3081