

Anti-S100A10 antibody [4E7E10] (STJ98375)

STJ98375

GENERAL INFORMATION

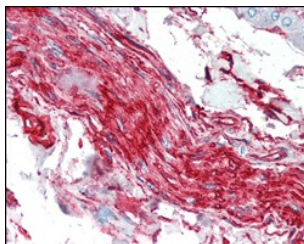
Product Type	Primary antibodies
Short Description	Mouse monoclonal antibody anti-Protein S100-A10 is suitable for use in Western Blot, Immunohistochemistry, Immunofluorescence and ELISA research applications.
Applications	WB/IHC/IF/ELISA
Host/Source	Mouse
Reactivity	Human

PRODUCT PROPERTIES

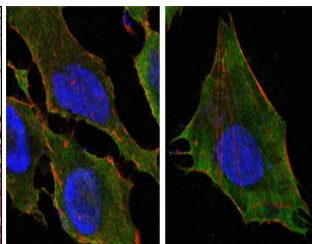
Clonality	Monoclonal
Clone ID	4E7E10
Concentration	
Conjugation	Unconjugated
Purification	Affinity purification
Dilution Range	WB 1:500-1:2000 IHC 1:200-1:1000 IF 1:200-1:1000 ELISA 1:10000
Formulation	Liquid in PBS containing 0.03% Sodium Azide, 0.5% BSA, 50% Glycerol.
Isotype	IgG1
Storage Instruction	Store at -20°C for up to 1 year from the date of receipt, and avoid repeat freeze-thaw cycles.

TARGET INFORMATION

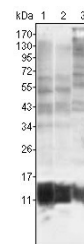
Gene ID	6281
Gene Symbol	S100A10
Uniprot ID	S10AA_HUMAN
Immunogen	Purified recombinant fragment of human S-100A10 expressed in E. Coli.
Immunogen Region	
Specificity	S-100A10 Monoclonal Antibody detects endogenous levels of S-100A10 protein.
Immunogen Sequence	



Immunohistochemistry analysis of paraffin-embedded human nerve and ganglion cells with AEC staining using S-100A10 monoclonal antibody.



Confocal immunofluorescence analysis of HeLa (left) and L-02 (right) cells using S-100A10 monoclonal antibody (green). Red: Actin filaments have been labeled with DY-554 phalloidin. Blue: DRAQ5 fluorescent DNA dye.



Western blot analysis using S-100A10 monoclonal antibody against MCF-7 (1), HepG2 (2) and HeLa (3).

This product is suitable for in-vitro studies under the RESEARCH USE ONLY [RUO] licence. This product must not be used as for diagnostic or other medical purposes.
St John's Laboratory Ltd, Knowledge Dock Business Centre, University Way, London, E16 2RD | Tel: 0208 223 3081