

Anti-S100A1 antibody [2C8B8/2C8E8/3C8D8] (STJ98373)

STJ98373

GENERAL INFORMATION

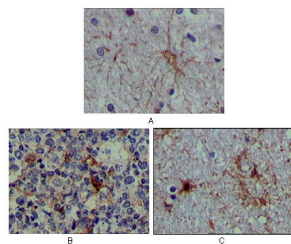
Product Type	Primary antibodies
Short Description	Mouse monoclonal antibody anti-Protein S100-A1 is suitable for use in Western Blot, Immunohistochemistry, Immunofluorescence and ELISA research applications.
Applications	WB/IHC/IF/ELISA
Host/Source	Mouse
Reactivity	Human

PRODUCT PROPERTIES

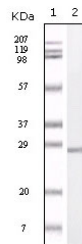
Clonality	Monoclonal
Clone ID	2C8B8/2C8E8/3C8D8
Concentration	
Conjugation	Unconjugated
Purification	Affinity purification
Dilution Range	WB 1:500-1:2000 IHC 1:200-1:1000 ELISA 1:10000 IF 1:50-200
Formulation	Liquid in PBS containing 0.03% Sodium Azide, 0.5% BSA, 50% Glycerol.
Isotype	IgG1
Storage Instruction	Store at -20°C for up to 1 year from the date of receipt, and avoid repeat freeze-thaw cycles.

TARGET INFORMATION

Gene ID	6271
Gene Symbol	S100A1
Uniprot ID	S10A1_HUMAN
Immunogen	Purified recombinant fragment of S-100 Alpha expressed in E. Coli.
Immunogen Region	
Specificity	S-100 Alpha Monoclonal Antibody detects endogenous levels of S-100 Alpha protein.
Immunogen Sequence	



Immunohistochemistry analysis of paraffin-embedded human brain tissue (A), lymphoid follicles tissue (B) and interbrain tissue (C), showing cytoplasmic localization with DAB staining using S-100 Alpha monoclonal antibody.



Western blot analysis using S-100 Alpha monoclonal antibody against truncated S-100 Alpha recombinant protein.