

## Anti-RPS6KA1 antibody [10B1D7A9/10B1D7E12/10B1D7] (STJ98366)

STJ98366

### GENERAL INFORMATION

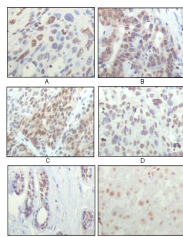
<b>Product Type</b>	Primary antibodies
<b>Short Description</b>	Mouse monoclonal antibody anti-Ribosomal protein S6 kinase alpha-1 is suitable for use in Western Blot, Immunohistochemistry, Immunofluorescence and ELISA research applications.
<b>Applications</b>	WB/IHC/IF/ELISA
<b>Host/Source</b>	Mouse
<b>Reactivity</b>	Human

### PRODUCT PROPERTIES

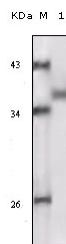
<b>Clonality</b>	Monoclonal
<b>Clone ID</b>	10B1D7A9/10B1D7E12/10B1D7
<b>Concentration</b>	
<b>Conjugation</b>	Unconjugated
<b>Purification</b>	Affinity purification
<b>Dilution Range</b>	WB 1:500-1:2000 IHC 1:200-1:1000 ELISA 1:10000 IF 1:50-200
<b>Formulation</b>	Liquid in PBS containing 0.03% Sodium Azide, 0.5% BSA, 50% Glycerol.
<b>Isotype</b>	IgG2a
<b>Storage Instruction</b>	Store at -20°C for up to 1 year from the date of receipt, and avoid repeat freeze-thaw cycles.

### TARGET INFORMATION

<b>Gene ID</b>	6195
<b>Gene Symbol</b>	RPS6KA1
<b>Uniprot ID</b>	KS6A1_HUMAN
<b>Immunogen</b>	Purified recombinant fragment of human Rsk-1 expressed in E. Coli.
<b>Immunogen Region</b>	
<b>Specificity</b>	Rsk-1 Monoclonal Antibody detects endogenous levels of Rsk-1 protein.
<b>Immunogen Sequence</b>	



Immunohistochemistry analysis of paraffin-embedded human esophageal squamous cell carcinoma (A), colon adenocarcinoma (B), liver carcinoma (C), skin carcinoma (D), breast ductal tumor (E) and brain tumor (F), showing nuclear localization with DAB staining



Western blot analysis using Rsk-1 monoclonal antibody against truncated Rsk-1 recombinant protein.