

Anti-ROR1 antibody (30-406 aa) [2H6] (STJ98365)

STJ98365

GENERAL INFORMATION

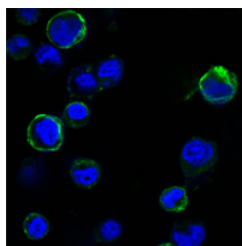
Product Type	Primary antibodies
Short Description	Mouse monoclonal antibody anti-Inactive tyrosine-protein kinase transmembrane receptor ROR1 (30-406 aa) is suitable for use in Western Blot, Immunofluorescence and ELISA research applications.
Applications	WB/IF/ELISA
Host/Source	Mouse
Reactivity	Human

PRODUCT PROPERTIES

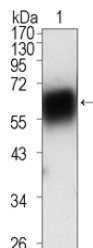
Clonality	Monoclonal
Clone ID	2H6
Concentration	
Conjugation	Unconjugated
Purification	Affinity purification
Dilution	WB 1:500-1:2000
Range	IF 1:200-1:1000 ELISA 1:10000
Formulation	Liquid in PBS containing 0.03% Sodium Azide, 0.5% BSA, 50% Glycerol.
Isotype	IgG1
Storage	Store at -20°C for up to 1 year from the date of receipt, and avoid repeat freeze-thaw cycles.
Instruction	

TARGET INFORMATION

Gene ID	4919
Gene Symbol	ROR1
Uniprot ID	ROR1_HUMAN
Immunogen	Recombinant extracellular fragment of human ROR1 (aa30-406) fused with hlgGfc tag, expressed in HEK293 cells
Immunogen Region	30-406 aa
Specificity	ROR1 Monoclonal Antibody detects endogenous levels of ROR1 protein.
Immunogen Sequence	



Confocal immunofluorescence analysis of HEK293 cells transfected with extracellular ROR1 (aa30-406) -hlgGfc using ROR1 monoclonal antibody (green). Blue: DAPI fluorescent DNA dye.



Western blot analysis using ROR1 monoclonal antibody against extracellular domain of human ROR1 (aa30-429).

This product is suitable for in-vitro studies under the RESEARCH USE ONLY [RUO] licence. This product must not be used as for diagnostic or other medical purposes.
St John's Laboratory Ltd, Knowledge Dock Business Centre, University Way, London, E16 2RD | Tel: 0208 223 3081