

Anti-RBP4 antibody [4C2] (STJ98356)

STJ98356

GENERAL INFORMATION

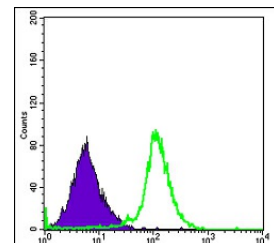
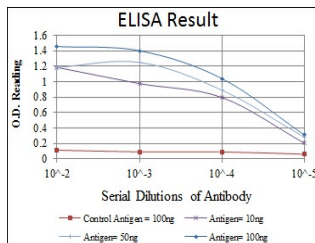
Product Type	Primary antibodies
Short Description	Mouse monoclonal antibody anti-Retinol-binding protein 4 is suitable for use in Western Blot, Immunohistochemistry, Immunofluorescence, Flow Cytometry and ELISA research applications.
Applications	WB/IHC/IF/FC/ELISA
Host/Source	Mouse
Reactivity	Human

PRODUCT PROPERTIES

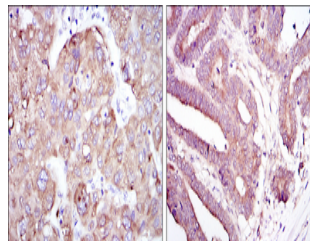
Clonality	Monoclonal
Clone ID	4C2
Concentration	
Conjugation	Unconjugated
Purification	Affinity purification
Dilution Range	WB 1:500-1:2000 IHC 1:200-1:1000 IF 1:200-1:1000 FC 1:200-1:400 ELISA 1:10000
Formulation	Liquid in PBS containing 0.03% Sodium Azide, 0.5% BSA, 50% Glycerol.
Isotype	IgG1
Storage	Store at -20°C for up to 1 year from the date of receipt, and avoid repeat freeze-thaw cycles.
Instruction	

TARGET INFORMATION

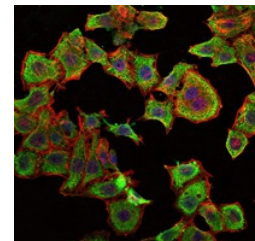
Gene ID	5950
Gene Symbol	RBP4
Uniprot ID	RET4_HUMAN
Immunogen	Purified recombinant fragment of human RBP4 expressed in E. Coli.
Immunogen Region	
Specificity	RBP4 Monoclonal Antibody detects endogenous levels of RBP4 protein.
Immunogen Sequence	



Flow cytometric analysis of HepG2 cells using RBP4 monoclonal antibody (green) and negative control (purple).



Immunohistochemistry analysis of paraffin-embedded liver cancer tissues (left) and stomach cancer tissues (right) with DAB staining using RBP4 monoclonal antibody.



Immunofluorescence analysis of HepG2 cells using RBP4 monoclonal antibody (green). Blue: DRAQ5 fluorescent DNA dye. Red: Actin filaments have been labeled with Alexa Fluor-555 phalloidin.

This product is suitable for in-vitro studies under the RESEARCH USE ONLY [RUO] licence. This product must not be used as for diagnostic or other medical purposes.
St John's Laboratory Ltd, Knowledge Dock Business Centre, University Way, London, E16 2RD | Tel: 0208 223 3081