

Anti-RB1 antibody [7E4B8] (STJ98355)

STJ98355

GENERAL INFORMATION

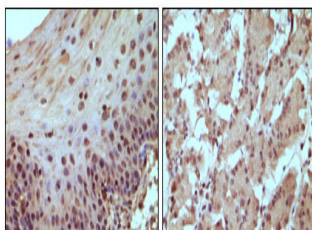
Product Type	Primary antibodies
Short Description	Mouse monoclonal antibody anti-Retinoblastoma-associated protein is suitable for use in Immunohistochemistry, Immunofluorescence and ELISA research applications.
Applications	IHC/IF/ELISA
Host/Source	Mouse
Reactivity	Human

PRODUCT PROPERTIES

Clonality	Monoclonal
Clone ID	7E4B8
Concentration	
Conjugation	Unconjugated
Purification	Affinity purification
Dilution Range	IHC 1:200-1:1000 ELISA 1:10000 IF 1:50-200
Formulation	Liquid in PBS containing 0.03% Sodium Azide, 0.5% BSA, 50% Glycerol.
Isotype	IgG1
Storage Instruction	Store at -20°C for up to 1 year from the date of receipt, and avoid repeat freeze-thaw cycles.

TARGET INFORMATION

Gene ID	5925
Gene Symbol	RB1
Uniprot ID	RB_HUMAN
Immunogen	Purified recombinant fragment of human Rb expressed in E. Coli.
Immunogen Region	
Specificity	Rb Monoclonal Antibody detects endogenous levels of Rb protein.
Immunogen Sequence	



Immunohistochemistry staining of paraffin-embedded human normal esophagus (A) and stomach (B) tissue, showing nucleus localization with DAB staining using Rb monoclonal antibody.