

Anti-BRAF antibody [1H12] (STJ98351)

STJ98351

GENERAL INFORMATION

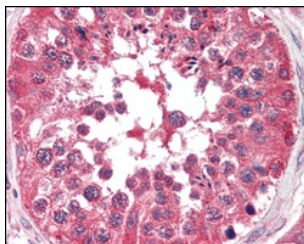
Product Type	Primary antibodies
Short Description	Mouse monoclonal antibody anti-Serine/threonine-protein kinase B-raf is suitable for use in Western Blot, Immunohistochemistry, Immunofluorescence and ELISA research applications.
Applications	WB/IHC/IF/ELISA
Host/Source	Mouse
Reactivity	Human/Mouse

PRODUCT PROPERTIES

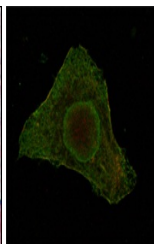
Clonality	Monoclonal
Clone ID	1H12
Concentration	
Conjugation	Unconjugated
Purification	Affinity purification
Dilution Range	WB 1:500-1:2000 IHC 1:200-1:1000 IF 1:200-1:1000 ELISA 1:10000
Formulation	Liquid in PBS containing 0.03% Sodium Azide, 0.5% BSA, 50% Glycerol.
Isotype	IgG1
Storage Instruction	Store at -20°C for up to 1 year from the date of receipt, and avoid repeat freeze-thaw cycles.

TARGET INFORMATION

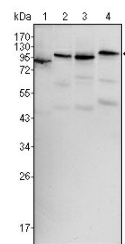
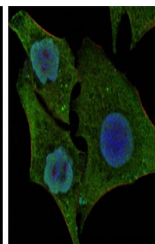
Gene ID	673
Gene Symbol	BRAF
Uniprot ID	BRAF_HUMAN
Immunogen	Purified recombinant fragment of human Raf-B expressed in E. Coli.
Immunogen Region	
Specificity	Raf-B Monoclonal Antibody detects endogenous levels of Raf-B protein.
Immunogen Sequence	



Immunohistochemistry analysis of paraffin-embedded human testis tissues with AEC staining using Raf-B monoclonal antibody.



Confocal immunofluorescence analysis of MCF-7 (left) and HepG2 (right) cells using Raf-B monoclonal antibody (green). Red: Actin filaments have been labeled with DY-554 phalloidin. Blue: DAPI fluorescent DNA dye



Western blot analysis using Raf-B monoclonal antibody against HeLa (1), HL60 (2), HepG2 (3) and NIH/3T3 (4) cell lysate.