

## Anti-ATP2C1 antibody [4G12] (STJ98326)

STJ98326

### GENERAL INFORMATION

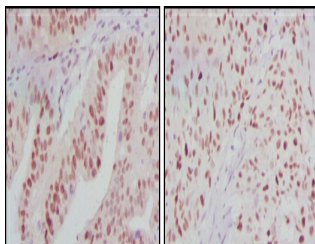
<b>Product Type</b>	Primary antibodies
<b>Short Description</b>	Mouse monoclonal antibody anti-Calcium-transporting ATPase type 2C member 1 pump PMR1/Mn2+-ATPase 2C1-transporting
<b>Applications</b>	ATPase type 1 is suitable for use in Western Blot, Immunohistochemistry, Immunofluorescence and ELISA research applications.
<b>Host/Source</b>	WB/IHC/IF/ELISA
<b>Host/Source</b>	Mouse
<b>Reactivity</b>	Human/Monkey

### PRODUCT PROPERTIES

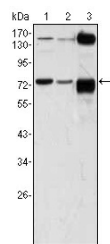
<b>Clonality</b>	Monoclonal
<b>Clone ID</b>	4G12
<b>Concentration</b>	
<b>Conjugation</b>	Unconjugated
<b>Purification</b>	Affinity purification
<b>Dilution</b>	WB 1:500-1:2000
<b>Range</b>	IHC 1:200-1:1000
	ELISA 1:10000
	IF 1:50-200
<b>Formulation</b>	Liquid in PBS containing 0.03% Sodium Azide, 0.5% BSA, 50% Glycerol.
<b>Isotype</b>	IgG1
<b>Storage</b>	Store at -20°C for up to 1 year from the date of receipt, and avoid repeat freeze-thaw cycles.
<b>Instruction</b>	

### TARGET INFORMATION

<b>Gene ID</b>	<a href="#">27032</a>
<b>Gene Symbol</b>	<a href="#">ATP2C1</a>
<b>Uniprot ID</b>	<a href="#">AT2C1_HUMAN</a>
<b>Immunogen</b>	Purified recombinant fragment of PMR1 expressed in E. Coli.
<b>Immunogen</b>	
<b>Region</b>	
<b>Specificity</b>	PMR1 Monoclonal Antibody detects endogenous levels of PMR1 protein.
<b>Immunogen</b>	
<b>Sequence</b>	



Immunohistochemistry analysis of paraffin-embedded human ovarian cancer (left) and breast cancer (right) tissues with DAB staining using PMR1 monoclonal antibody.



Western blot analysis using PMR1 monoclonal antibody against A431 (1), HeLa (2) and HEK293 (3) cell lysate.

This product is suitable for in-vitro studies under the RESEARCH USE ONLY [RUO] licence. This product must not be used as for diagnostic or other medical purposes.  
St John's Laboratory Ltd, Knowledge Dock Business Centre, University Way, London, E16 2RD | Tel: 0208 223 3081