

Anti-ALPP antibody [3E5] (STJ98324)

STJ98324

GENERAL INFORMATION

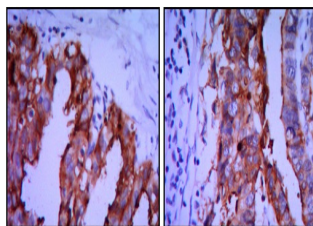
| | |
|--------------------------|------------------------------------------------------------------------------------------------------------------------------------------------------------------------------------|
| Product Type | Primary antibodies |
| Short Description | Mouse monoclonal antibody anti-Alkaline phosphatase, placental type is suitable for use in Western Blot, Immunohistochemistry, Immunofluorescence and ELISA research applications. |
| Applications | WB/IHC/IF/ELISA |
| Host/Source | Mouse |
| Reactivity | Human |

PRODUCT PROPERTIES

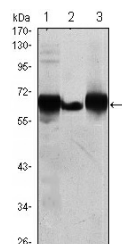
| | |
|----------------------------|------------------------------------------------------------------------------------------------|
| Clonality | Monoclonal |
| Clone ID | 3E5 |
| Concentration | |
| Conjugation | Unconjugated |
| Purification | Affinity purification |
| Dilution Range | WB 1:500-1:2000 IHC 1:200-1:1000 ELISA 1:10000 IF 1:50-200 |
| Formulation | Liquid in PBS containing 0.03% Sodium Azide, 0.5% BSA, 50% Glycerol. |
| Isotype | IgG2b |
| Storage Instruction | Store at -20°C for up to 1 year from the date of receipt, and avoid repeat freeze-thaw cycles. |

TARGET INFORMATION

| | |
|---------------------------|---------------------------------------------------------------------|
| Gene ID | 250 |
| Gene Symbol | ALPP |
| Uniprot ID | PPB1_HUMAN |
| Immunogen | Purified recombinant fragment of human PLAP expressed in E. Coli. |
| Immunogen Region | |
| Specificity | PLAP Monoclonal Antibody detects endogenous levels of PLAP protein. |
| Immunogen Sequence | |



Immunohistochemistry analysis of paraffin-embedded ovarian cancer (A), stomach cancer (B) with DAB staining using PLAP monoclonal antibody.



Western blot analysis using PLAP monoclonal antibody against HepG2 (1), A431 (2) and MCF-7 (3) cell lysate.