

Anti-PEG10 antibody (1-120 aa) [1B1C4] (STJ98317)

STJ98317

GENERAL INFORMATION

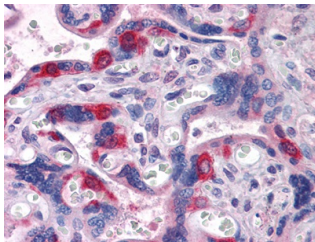
Product Type	Primary antibodies
Short Description	Mouse monoclonal antibody anti-Retrotransposon-derived protein PEG10 (1-120 aa) is suitable for use in Western Blot, Immunohistochemistry, Immunofluorescence and ELISA research applications.
Applications	WB/IHC/IF/ELISA
Host/Source	Mouse
Reactivity	Human

PRODUCT PROPERTIES

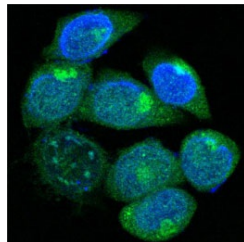
Clonality	Monoclonal
Clone ID	1B1C4
Concentration	
Conjugation	Unconjugated
Purification	Affinity purification
Dilution	WB 1:500-1:2000
Range	IHC 1:200-1:1000 IF 1:200-1:1000 ELISA 1:10000
Formulation	Liquid in PBS containing 0.03% Sodium Azide, 0.5% BSA, 50% Glycerol.
Isotype	IgG1
Storage Instruction	Store at -20°C for up to 1 year from the date of receipt, and avoid repeat freeze-thaw cycles.

TARGET INFORMATION

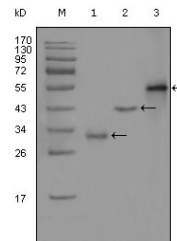
Gene ID	23089
Gene Symbol	PEG10
Uniprot ID	PEG10_HUMAN
Immunogen	Purified recombinant fragment of PEG10 (aa1-120) expressed in E. Coli.
Immunogen	1-120 aa
Region	
Specificity	PEG10 Monoclonal Antibody detects endogenous levels of PEG10 protein.
Immunogen Sequence	



Immunohistochemistry analysis of paraffin-embedded human Placenta tissues with AEC staining using PEG10 monoclonal antibody.



Confocal immunofluorescence analysis of methanol-fixed HepG2 cells using PEG10 monoclonal antibody (green), showing cytoplasmic localization. Blue: DRAQ5 fluorescent DNA dye.



Western blot analysis using PEG10 monoclonal antibody against truncated Trx-PEG10 recombinant protein (1), truncated GST-PEG10 (aa1-120) recombinant protein (2) and full-length PEG10 (aa1-325) hlgGfC transfected CHO-K1 cell lysate (3).

This product is suitable for in-vitro studies under the RESEARCH USE ONLY [RUO] licence. This product must not be used as for diagnostic or other medical purposes.

St John's Laboratory Ltd, Knowledge Dock Business Centre, University Way, London, E16 2RD | Tel: 0208 223 3081