

Anti-OTX2 antibody [1H12C4B5] (STJ98292)

STJ98292

GENERAL INFORMATION

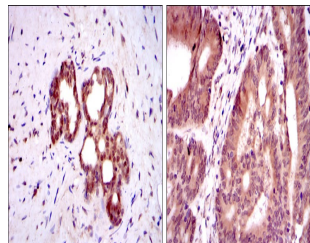
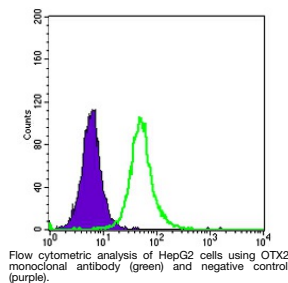
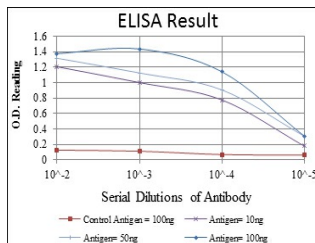
Product Type	Primary antibodies
Short Description	Mouse monoclonal antibody anti-Homeobox protein OTX2 is suitable for use in Western Blot, Immunohistochemistry, Immunofluorescence, Flow Cytometry and ELISA research applications.
Applications	WB/IHC/IF/FC/ELISA
Host/Source	Mouse
Reactivity	Human

PRODUCT PROPERTIES

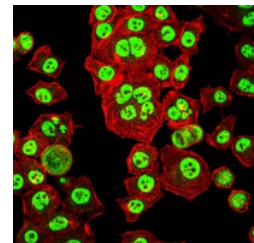
Clonality	Monoclonal
Clone ID	1H12C4B5
Concentration	
Conjugation	Unconjugated
Purification	Affinity purification
Dilution Range	WB 1:500-1:2000 IHC 1:200-1:1000 IF 1:200-1:1000 FC 1:200-1:400 ELISA 1:10000
Formulation	Liquid in PBS containing 0.03% Sodium Azide, 0.5% BSA, 50% Glycerol.
Isotype	IgG1
Storage	Store at -20°C for up to 1 year from the date of receipt, and avoid repeat freeze-thaw cycles.
Instruction	

TARGET INFORMATION

Gene ID	5015
Gene Symbol	OTX2
Uniprot ID	OTX2_HUMAN
Immunogen	Purified recombinant fragment of human OTX2 expressed in E. Coli.
Immunogen Region	
Specificity	OTX2 Monoclonal Antibody detects endogenous levels of OTX2 protein.
Immunogen Sequence	



Immunohistochemistry analysis of paraffin-embedded prostate tissues (left) and colon cancer tissues (right) with DAB staining using OTX2 monoclonal antibody.



Immunofluorescence analysis of HepG2 cells using OTX2 monoclonal antibody (green). Red: Actin filaments have been labeled with Alexa Fluor-555 phalloidin.

This product is suitable for in-vitro studies under the RESEARCH USE ONLY [RUO] licence. This product must not be used as for diagnostic or other medical purposes.

St John's Laboratory Ltd, Knowledge Dock Business Centre, University Way, London, E16 2RD | Tel: 0208 223 3081