

Anti-NME1 antibody [4B2] (STJ98280)

STJ98280

GENERAL INFORMATION

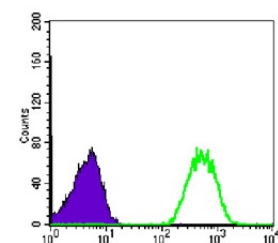
Product Type	Primary antibodies
Short Description	Mouse monoclonal antibody anti-Nucleoside diphosphate kinase A is suitable for use in Western Blot, Immunohistochemistry, Immunofluorescence, Flow Cytometry and ELISA research applications.
Applications	WB/IHC/IF/FC/ELISA
Host/Source	Mouse
Reactivity	Human

PRODUCT PROPERTIES

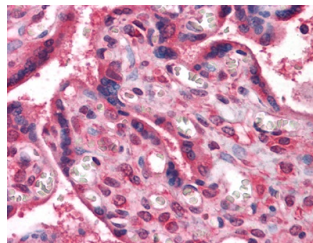
Clonality	Monoclonal
Clone ID	4B2
Concentration	
Conjugation	Unconjugated
Purification	Affinity purification
Dilution Range	WB 1:500-1:2000 IHC 1:200-1:1000 IF 1:200-1:1000 FC 1:200-1:400 ELISA 1:10000
Formulation	Liquid in PBS containing 0.03% Sodium Azide, 0.5% BSA, 50% Glycerol.
Isotype	IgG1
Storage	Store at -20°C for up to 1 year from the date of receipt, and avoid repeat freeze-thaw cycles.
Instruction	

TARGET INFORMATION

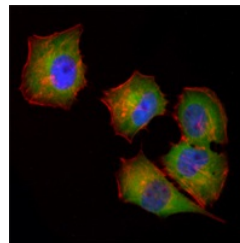
Gene ID	4830
Gene Symbol	NME1
Uniprot ID	NDKA_HUMAN
Immunogen	Purified recombinant fragment of human NM23-H1 expressed in E. Coli.
Immunogen Region	
Specificity	NM23-H1 Monoclonal Antibody detects endogenous levels of NM23-H1 protein.
Immunogen Sequence	



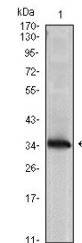
Flow cytometric analysis of Jurkat cells using NM23-H1 monoclonal antibody (green) and negative control (purple).



Immunohistochemistry analysis of paraffin-embedded human Placenta tissues with AEC staining using NM23-H1 monoclonal antibody.



Immunofluorescence analysis of HeLa cells using NM23-H1 monoclonal antibody (green). Red: Actin filaments have been labeled with Alexa Fluor-555 phalloidin. Blue: DRAQ5 fluorescent DNA dye.



Western blot analysis using NM23-H1 monoclonal antibody against NME1-hlgGf transfected HEK293 cell lysate.

This product is suitable for in-vitro studies under the RESEARCH USE ONLY [RUO] licence. This product must not be used as for diagnostic or other medical purposes.
St John's Laboratory Ltd, Knowledge Dock Business Centre, University Way, London, E16 2RD | Tel: 0208 223 3081