

Anti-ERBB2 antibody (750-987 aa) [6C2] (STJ98272)

STJ98272

GENERAL INFORMATION

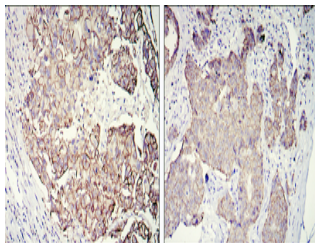
Product Type	Primary antibodies
Short Description	Mouse monoclonal antibody anti-Receptor tyrosine-protein kinase erbB-2 (750-987 aa) is suitable for use in Western Blot, Immunohistochemistry, Immunofluorescence, Flow Cytometry and ELISA research applications.
Applications	WB/IHC/IF/FC/ELISA
Host/Source	Mouse
Reactivity	Human

PRODUCT PROPERTIES

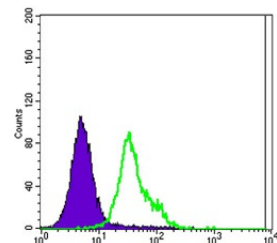
Clonality	Monoclonal
Clone ID	6C2
Concentration	
Conjugation	Unconjugated
Purification	Affinity purification
Dilution	WB 1:500-1:2000
Range	IHC 1:200-1:1000 FC 1:200-1:400 ELISA 1:10000 IF 1:50-200
Formulation	Liquid in PBS containing 0.03% Sodium Azide, 0.5% BSA, 50% Glycerol.
Isotype	IgG1
Storage	Store at -20°C for up to 1 year from the date of receipt, and avoid repeat freeze-thaw cycles.
Instruction	

TARGET INFORMATION

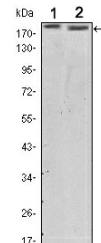
Gene ID	2064
Gene Symbol	ERBB2
Uniprot ID	ERBB2_HUMAN
Immunogen	Purified recombinant fragment of human Neu (aa750-987) expressed in E. Coli.
Immunogen Region	750-987 aa
Specificity	Neu Monoclonal Antibody detects endogenous levels of Neu protein.
Immunogen Sequence	



Immunohistochemistry analysis of paraffin-embedded galactophore tumour with DAB staining using Neu monoclonal antibody.



Flow cytometric analysis of MCF-7 cells using Neu monoclonal antibody (green) and negative control (purple).



Western blot analysis using Neu monoclonal antibody against SKBR3 (1) and MCF-7 (2) cell lysate.

This product is suitable for in-vitro studies under the RESEARCH USE ONLY [RUO] licence. This product must not be used as for diagnostic or other medical purposes.
St John's Laboratory Ltd, Knowledge Dock Business Centre, University Way, London, E16 2RD | Tel: 0208 223 3081