

Anti-ERBB2 antibody (750-987 aa) [6C2B12/9B9D8] (STJ98271)

STJ98271

GENERAL INFORMATION

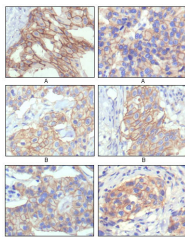
Product Type	Primary antibodies
Short Description	Mouse monoclonal antibody anti-Receptor tyrosine-protein kinase erbB-2 (750-987 aa) is suitable for use in Western Blot, Immunohistochemistry, Immunofluorescence and ELISA research applications.
Applications	WB/IHC/IF/ELISA
Host/Source	Mouse
Reactivity	Human

PRODUCT PROPERTIES

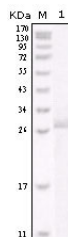
Clonality	Monoclonal
Clone ID	6C2B12/9B9D8
Concentration	
Conjugation	Unconjugated
Purification	Affinity purification
Dilution	WB 1:500-1:2000
Range	IHC 1:200-1:1000 ELISA 1:10000 IF 1:50-200
Formulation	Liquid in PBS containing 0.03% Sodium Azide, 0.5% BSA, 50% Glycerol.
Isotype	IgG1, IgG2b
Storage Instruction	Store at -20°C for up to 1 year from the date of receipt, and avoid repeat freeze-thaw cycles.

TARGET INFORMATION

Gene ID	2064
Gene Symbol	ERBB2
Uniprot ID	ERBB2_HUMAN
Immunogen	Purified recombinant fragment of human Neu (aa750-987) expressed in E. Coli.
Immunogen	750-987 aa
Region	
Specificity	Neu Monoclonal Antibody detects endogenous levels of Neu protein.
Immunogen Sequence	



Immunohistochemistry analysis of paraffin-embedded human breast intraductal carcinoma tissues (A) and breast infiltrating ductal carcinoma tissues (B) showing membrane localization with DAB staining using Neu monoclonal antibody.



Western blot analysis using Neu monoclonal antibody against truncated Neu recombinant protein.