

Anti-MYL2 antibody [7C9] (STJ98260)

STJ98260

GENERAL INFORMATION

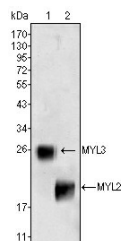
Product Type	Primary antibodies
Short Description	Mouse monoclonal antibody anti-Myosin regulatory light chain 2, ventricular/cardiac muscle isoform is suitable for use in Western Blot and ELISA research applications.
Applications	WB/ELISA
Host/Source	Mouse
Reactivity	Human

PRODUCT PROPERTIES

Clonality	Monoclonal
Clone ID	7C9
Concentration	
Conjugation	Unconjugated
Purification	Affinity purification
Dilution Range	WB 1:500-1:2000 ELISA 1:10000
Formulation	Liquid in PBS containing 0.03% Sodium Azide, 0.5% BSA, 50% Glycerol.
Isotype	IgG1
Storage	Store at -20°C for up to 1 year from the date of receipt, and avoid repeat freeze-thaw cycles.
Instruction	

TARGET INFORMATION

Gene ID	4633
Gene Symbol	MYL2
Uniprot ID	MLRV_HUMAN
Immunogen	Purified recombinant fragment of MYL2 expressed in E. Coli.
Immunogen Region	
Specificity	MYL2 Monoclonal Antibody detects endogenous levels of MYL2 protein.
Immunogen Sequence	



Western blot analysis using MYL2 monoclonal antibody against rat fetal heart tissue lysate.

This product is suitable for in-vitro studies under the RESEARCH USE ONLY [RUO] licence. This product must not be used as for diagnostic or other medical purposes.
St John's Laboratory Ltd, Knowledge Dock Business Centre, University Way, London, E16 2RD | Tel: 0208 223 3081