

Anti-MSI2 antibody [2C11] (STJ98254)

STJ98254

GENERAL INFORMATION

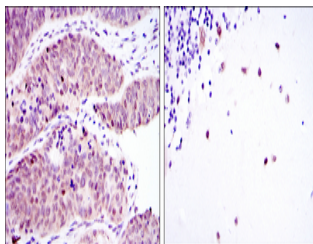
Product Type	Primary antibodies
Short Description	Mouse monoclonal antibody anti-RNA-binding protein Musashi homolog 2 is suitable for use in Western Blot, Immunohistochemistry, Immunofluorescence and ELISA research applications.
Applications	WB/IHC/IF/ELISA
Host/Source	Mouse
Reactivity	Human

PRODUCT PROPERTIES

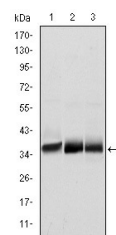
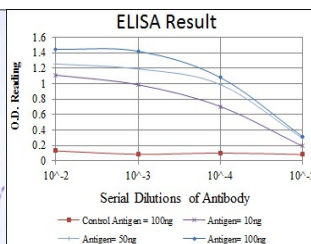
Clonality	Monoclonal
Clone ID	2C11
Concentration	
Conjugation	Unconjugated
Purification	Affinity purification
Dilution Range	WB 1:500-1:2000 IHC 1:200-1:1000 ELISA 1:10000 IF 1:50-200
Formulation	Liquid in PBS containing 0.03% Sodium Azide, 0.5% BSA, 50% Glycerol.
Isotype	IgG1
Storage Instruction	Store at -20°C for up to 1 year from the date of receipt, and avoid repeat freeze-thaw cycles.

TARGET INFORMATION

Gene ID	124540
Gene Symbol	MSI2
Uniprot ID	MSI2H_HUMAN
Immunogen	Purified recombinant fragment of human Msi2 expressed in E. Coli.
Immunogen Region	
Specificity	Msi2 Monoclonal Antibody detects endogenous levels of Msi2 protein.
Immunogen Sequence	



Immunohistochemistry analysis of paraffin-embedded ovarian cancer (left) and cerebellum tissues (right) with DAB staining using Msi2 monoclonal antibody.



Western blot analysis using Msi2 monoclonal antibody against NTERA-2 (1), SW620 (2) and T47D (3) cell lysate.

This product is suitable for in-vitro studies under the RESEARCH USE ONLY [RUO] licence. This product must not be used as for diagnostic or other medical purposes.
St John's Laboratory Ltd, Knowledge Dock Business Centre, University Way, London, E16 2RD | Tel: 0208 223 3081