

Anti-KAT8 antibody [8C4C4] (STJ98250)

STJ98250

GENERAL INFORMATION

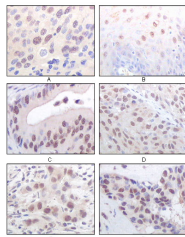
| | |
|--------------------------|--|
| Product Type | Primary antibodies |
| Short Description | Mouse monoclonal antibody anti-Histone acetyltransferase KAT8 is suitable for use in Western Blot, Immunohistochemistry, Immunofluorescence and ELISA research applications. |
| Applications | WB/IHC/IF/ELISA |
| Host/Source | Mouse |
| Reactivity | Human |

PRODUCT PROPERTIES

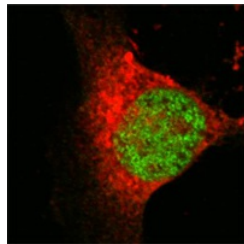
| | |
|----------------------------|--|
| Clonality | Monoclonal |
| Clone ID | 8C4C4 |
| Concentration | |
| Conjugation | Unconjugated |
| Purification | Affinity purification |
| Dilution Range | WB 1:500-1:2000 IHC 1:200-1:1000 IF 1:200-1:1000 ELISA 1:10000 |
| Formulation | Liquid in PBS containing 0.03% Sodium Azide, 0.5% BSA, 50% Glycerol. |
| Isotype | IgG2b |
| Storage Instruction | Store at -20°C for up to 1 year from the date of receipt, and avoid repeat freeze-thaw cycles. |

TARGET INFORMATION

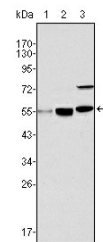
| | |
|---------------------------|---|
| Gene ID | 84148 |
| Gene Symbol | KAT8 |
| Uniprot ID | KAT8_HUMAN |
| Immunogen | Purified recombinant fragment of human MOF expressed in E. Coli. |
| Immunogen Region | |
| Specificity | MOF Monoclonal Antibody detects endogenous levels of MOF protein. |
| Immunogen Sequence | |



Immunohistochemistry analysis of paraffin-embedded human esophageal squamous cell carcinoma (A), normal esophageal epithelium (B), rectum adenocarcinoma (C), lung squamous cell carcinoma (D), breast infiltrating carcinoma (E), and breast infiltrating carci (F).



Confocal immunofluorescence analysis of Eca 109 cells using MOF monoclonal antibody (green), showing nuclear localization.



Western blot analysis using MOF monoclonal antibody against HeLa (1), HepG2 (2) and SMMC-7721 (3) cell lysate.