

## Anti-KMT2A antibody (3751-3968 aa) [10F8D7] (STJ98246)

STJ98246

### GENERAL INFORMATION

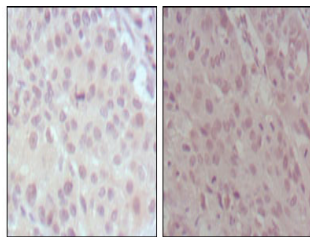
<b>Product Type</b>	Primary antibodies
<b>Short Description</b>	Mouse monoclonal antibody anti-Histone-lysine N-methyltransferase 2A (3751-3968 aa) is suitable for use in Western Blot, Immunohistochemistry, Immunofluorescence and ELISA research applications.
<b>Applications</b>	WB/IHC/IF/ELISA
<b>Host/Source</b>	Mouse
<b>Reactivity</b>	Human

### PRODUCT PROPERTIES

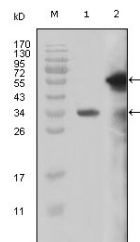
<b>Clonality</b>	Monoclonal
<b>Clone ID</b>	10F8D7
<b>Concentration</b>	
<b>Conjugation</b>	Unconjugated
<b>Purification</b>	Affinity purification
<b>Dilution</b>	WB 1:500-1:2000
<b>Range</b>	IHC 1:200-1:1000 ELISA 1:10000 IF 1:50-200
<b>Formulation</b>	Liquid in PBS containing 0.03% Sodium Azide, 0.5% BSA, 50% Glycerol.
<b>Isotype</b>	IgG1
<b>Storage</b>	Store at -20°C for up to 1 year from the date of receipt, and avoid repeat freeze-thaw cycles.
<b>Instruction</b>	

### TARGET INFORMATION

<b>Gene ID</b>	4297
<b>Gene Symbol</b>	KMT2A
<b>Uniprot ID</b>	KMT2A_HUMAN
<b>Immunogen</b>	Purified recombinant fragment of MLL (aa3751-3968) expressed in E. Coli.
<b>Immunogen</b>	3751-3968 aa
<b>Region</b>	
<b>Specificity</b>	MLL Monoclonal Antibody detects endogenous levels of MLL protein.
<b>Immunogen</b>	
<b>Sequence</b>	



Immunohistochemistry analysis of paraffin-embedded human lung cancer (left) and esophagus cancer (right), showing nuclear localization with DAB staining using MLL monoclonal antibody.



Western blot analysis using MLL monoclonal antibody against truncated MLL recombinant protein (1) and truncated GFP-MLL (aa3714-3969) transfected Cos7 cell lysate (2).