

## Anti-MDM4 antibody [2D10F4] (STJ98235)

STJ98235

### GENERAL INFORMATION

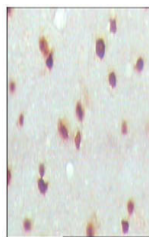
<b>Product Type</b>	Primary antibodies
<b>Short Description</b>	Mouse monoclonal antibody anti-Protein Mdm4 is suitable for use in Western Blot, Immunohistochemistry, Immunofluorescence and ELISA research applications.
<b>Applications</b>	WB/IHC/IF/ELISA
<b>Host/Source</b>	Mouse
<b>Reactivity</b>	Human

### PRODUCT PROPERTIES

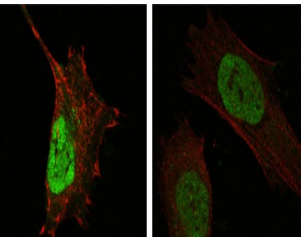
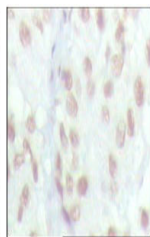
<b>Clonality</b>	Monoclonal
<b>Clone ID</b>	2D10F4
<b>Concentration</b>	
<b>Conjugation</b>	Unconjugated
<b>Purification</b>	Affinity purification
<b>Dilution Range</b>	WB 1:500-1:2000 IHC 1:200-1:1000 IF 1:200-1:1000 ELISA 1:10000
<b>Formulation</b>	Liquid in PBS containing 0.03% Sodium Azide, 0.5% BSA, 50% Glycerol.
<b>Isotype</b>	IgG1
<b>Storage Instruction</b>	Store at -20°C for up to 1 year from the date of receipt, and avoid repeat freeze-thaw cycles.

### TARGET INFORMATION

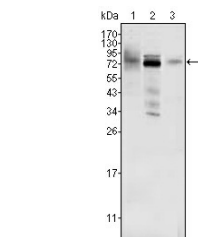
<b>Gene ID</b>	4194
<b>Gene Symbol</b>	MDM4
<b>Uniprot ID</b>	MDM4_HUMAN
<b>Immunogen</b>	Purified recombinant fragment of human MDMX expressed in E. Coli.
<b>Immunogen Region</b>	
<b>Specificity</b>	MDMX Monoclonal Antibody detects endogenous levels of MDMX protein.
<b>Immunogen Sequence</b>	



Immunohistochemistry analysis of paraffin-embedded human cerebra (left) and lung carcinoma (right) tissues, showing nuclear localization with DAB staining using MDMX monoclonal antibody.



Confocal immunofluorescence analysis of HeLa (left) and L-02 (right) cells using MDMX monoclonal antibody (green). Red: Actin filaments have been labeled with DY-554 phalloidin.



Western blot analysis using MDMX monoclonal antibody against HeLa (1), A549 (2) and A431 (3) cell lysate.