

Anti-CCL2 antibody [1A7B8] (STJ98233)

STJ98233

GENERAL INFORMATION

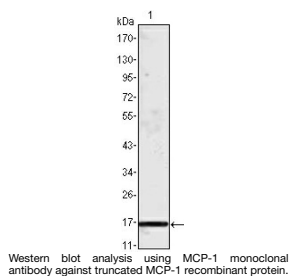
Product Type	Primary antibodies
Short Description	Mouse monoclonal antibody anti-C-C motif chemokine 2 is suitable for use in Western Blot and ELISA research applications.
Applications	WB/ELISA
Host/Source	Mouse
Reactivity	Human

PRODUCT PROPERTIES

Clonality	Monoclonal
Clone ID	1A7B8
Concentration	1 mg/mL
Conjugation	Unconjugated
Purification	Affinity purification
Dilution Range	WB 1:500-1:2000 ELISA 1:10000
Formulation	Liquid in PBS containing 0.03% Sodium Azide.
Isotype	IgG1
Storage Instruction	Store at -20°C for up to 1 year from the date of receipt, and avoid repeat freeze-thaw cycles.

TARGET INFORMATION

Gene ID	6347
Gene Symbol	CCL2
Uniprot ID	CCL2_HUMAN
Immunogen	Purified recombinant fragment of human MCP-1 expressed in E. Coli.
Immunogen Region	
Specificity	MCP-1 Monoclonal Antibody detects endogenous levels of MCP-1 protein.
Immunogen Sequence	



This product is suitable for in-vitro studies under the RESEARCH USE ONLY [RUO] licence. This product must not be used as for diagnostic or other medical purposes.
St John's Laboratory Ltd, Knowledge Dock Business Centre, University Way, London, E16 2RD | Tel: 0208 223 3081