

Anti-MCL1 antibody [8C6/8C6D4B1] (STJ98232)

STJ98232

GENERAL INFORMATION

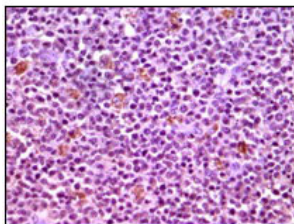
Product Type	Primary antibodies
Short Description	Mouse monoclonal antibody anti-Induced myeloid leukemia cell differentiation protein Mcl-1 is suitable for use in Western Blot, Immunohistochemistry, Immunofluorescence and ELISA research applications.
Applications	WB/IHC/IF/ELISA
Host/Source	Mouse
Reactivity	Human

PRODUCT PROPERTIES

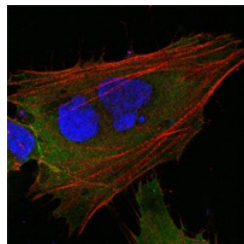
Clonality	Monoclonal
Clone ID	8C6/8C6D4B1
Concentration	1 mg/mL
Conjugation	Unconjugated
Purification	Affinity purification
Dilution	WB 1:500-1:2000
Range	IHC 1:200-1:1000 IF 1:200-1:1000 ELISA 1:10000
Formulation	Liquid in PBS containing 0.03% Sodium Azide.
Isotype	IgG1
Storage Instruction	Store at -20°C for up to 1 year from the date of receipt, and avoid repeat freeze-thaw cycles.

TARGET INFORMATION

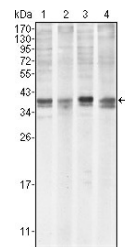
Gene ID	4170
Gene Symbol	MCL1
Uniprot ID	MCL1_HUMAN
Immunogen	Purified recombinant fragment of human MCL-1 expressed in E. Coli.
Immunogen Region	
Specificity	Mcl-1 Monoclonal Antibody detects endogenous levels of Mcl-1 protein.
Immunogen Sequence	



Immunohistochemistry analysis of paraffin-embedded human lymphnode tissues with DAB staining using Mcl-1 monoclonal antibody.



Confocal immunofluorescence analysis of HepG2 cells using Mcl-1 monoclonal antibody (green). Red: Actin filaments have been labeled with DY-554 phalloidin. Blue: DRAQS fluorescent DNA dye.



Western blot analysis using Mcl-1 monoclonal antibody against HeLa (1), BCBL-1 (2), Jurkat (3) and HL60 (4) cell lysate.