

Anti-SCGB2A2 antibody [1G8D6/2E7G9] (STJ98228)

STJ98228

GENERAL INFORMATION

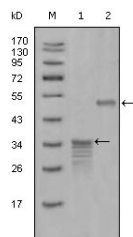
Product Type	Primary antibodies
Short Description	Mouse monoclonal antibody anti-Mammaglobin-A is suitable for use in Western Blot and ELISA research applications.
Applications	WB/ELISA
Host/Source	Mouse
Reactivity	Human

PRODUCT PROPERTIES

Clonality	Monoclonal
Clone ID	1G8D6/2E7G9
Concentration	
Conjugation	Unconjugated
Purification	Affinity purification
Dilution Range	WB 1:500-1:2000 ELISA 1:10000
Formulation	Liquid in PBS containing 0.03% Sodium Azide, 0.5% BSA, 50% Glycerol.
Isotype	IgG1
Storage Instruction	Store at -20°C for up to 1 year from the date of receipt, and avoid repeat freeze-thaw cycles.

TARGET INFORMATION

Gene ID	4250
Gene Symbol	SCGB2A2
Uniprot ID	SG2A2_HUMAN
Immunogen	Purified recombinant fragment of Mammaglobin A expressed in E. Coli.
Immunogen Region	
Specificity	Mammaglobin A Monoclonal Antibody detects endogenous levels of Mammaglobin A protein.
Immunogen Sequence	



Western blot analysis using Mammaglobin A monoclonal antibody against full-length GST-Mammaglobin-1 (1) and full-length MBP-Mammaglobin-1 (aa1-193) recombinant protein (2).

This product is suitable for in-vitro studies under the RESEARCH USE ONLY [RUO] licence. This product must not be used as for diagnostic or other medical purposes.
St John's Laboratory Ltd, Knowledge Dock Business Centre, University Way, London, E16 2RD | Tel: 0208 223 3081