

## Anti-LYN antibody [2H8D7] (STJ98226)

STJ98226

### GENERAL INFORMATION

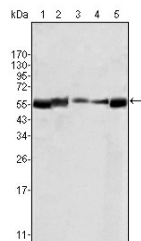
<b>Product Type</b>	Primary antibodies
<b>Short Description</b>	Mouse monoclonal antibody anti-Tyrosine-protein kinase Lyn is suitable for use in Western Blot and ELISA research applications.
<b>Applications</b>	WB/ELISA
<b>Host/Source</b>	Mouse
<b>Reactivity</b>	Human

### PRODUCT PROPERTIES

<b>Clonality</b>	Monoclonal
<b>Clone ID</b>	2H8D7
<b>Concentration</b>	
<b>Conjugation</b>	Unconjugated
<b>Purification</b>	Affinity purification
<b>Dilution Range</b>	WB 1:500-1:2000 ELISA 1:10000
<b>Formulation</b>	Liquid in PBS containing 0.03% Sodium Azide, 0.5% BSA, 50% Glycerol.
<b>Isotype</b>	IgG2b
<b>Storage Instruction</b>	Store at -20°C for up to 1 year from the date of receipt, and avoid repeat freeze-thaw cycles.

### TARGET INFORMATION

<b>Gene ID</b>	4067
<b>Gene Symbol</b>	LYN
<b>Uniprot ID</b>	LYN_HUMAN
<b>Immunogen</b>	Purified recombinant fragment of Lyn expressed in E. Coli.
<b>Immunogen Region</b>	
<b>Specificity</b>	Lyn Monoclonal Antibody detects endogenous levels of Lyn protein.
<b>Immunogen Sequence</b>	



Western blot analysis using Lyn monoclonal antibody against HL60 (1), LS40 (2), SLLP-M2 (3), SEM (4) and Ramos (5) cell lysate.

This product is suitable for in-vitro studies under the RESEARCH USE ONLY [RUO] licence. This product must not be used as for diagnostic or other medical purposes.  
St John's Laboratory Ltd, Knowledge Dock Business Centre, University Way, London, E16 2RD | Tel: 0208 223 3081