

## Anti-LPP antibody [8B3A11] (STJ98223)

STJ98223

### GENERAL INFORMATION

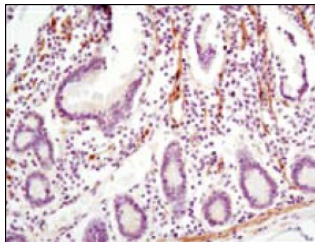
<b>Product Type</b>	Primary antibodies
<b>Short Description</b>	Mouse monoclonal antibody anti-Lipoma-preferred partner is suitable for use in Western Blot, Immunohistochemistry, Immunofluorescence and ELISA research applications.
<b>Applications</b>	WB/IHC/IF/ELISA
<b>Host/Source</b>	Mouse
<b>Reactivity</b>	Human/Mouse/Monkey/Hamster

### PRODUCT PROPERTIES

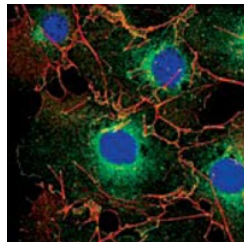
<b>Clonality</b>	Monoclonal
<b>Clone ID</b>	8B3A11
<b>Concentration</b>	
<b>Conjugation</b>	Unconjugated
<b>Purification</b>	Affinity purification
<b>Dilution Range</b>	WB 1:500-1:2000 IHC 1:200-1:1000 IF 1:200-1:1000 ELISA 1:10000
<b>Formulation</b>	Liquid in PBS containing 0.03% Sodium Azide, 0.5% BSA, 50% Glycerol.
<b>Isotype</b>	IgG1
<b>Storage Instruction</b>	Store at -20°C for up to 1 year from the date of receipt, and avoid repeat freeze-thaw cycles.

### TARGET INFORMATION

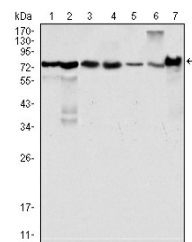
<b>Gene ID</b>	4026
<b>Gene Symbol</b>	LPP
<b>Uniprot ID</b>	LPP_HUMAN
<b>Immunogen</b>	Purified recombinant fragment of human LPP expressed in E. Coli.
<b>Immunogen Region</b>	
<b>Specificity</b>	LPP Monoclonal Antibody detects endogenous levels of LPP protein.
<b>Immunogen Sequence</b>	



Immunohistochemistry analysis of paraffin-embedded human small intestine with DAB staining using LPP monoclonal antibody.



Confocal immunofluorescence analysis of COS cells using LPP monoclonal antibody (green). Red: Actin filaments have been labeled using DY-554 phalloidin. Blue: DRAQ5 fluorescent DNA dye.



Western blot analysis using LPP monoclonal antibody against HeLa (1), NIH/3T3 (2), COS (3), Caki (4), MCF-7 (5), HepG2 (6) and SMMC-7721 (7) cell lysate.