

## Anti-LIN28A antibody (93-209 aa) [6D1F9] (STJ98218)

STJ98218

### GENERAL INFORMATION

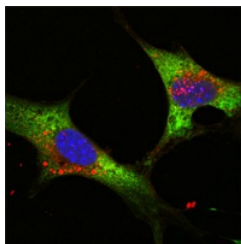
<b>Product Type</b>	Primary antibodies
<b>Short Description</b>	Mouse monoclonal antibody anti-Protein lin-28 homolog A (93-209 aa) is suitable for use in Western Blot, Immunofluorescence and ELISA research applications.
<b>Applications</b>	WB/IF/ELISA
<b>Host/Source</b>	Mouse
<b>Reactivity</b>	Human

### PRODUCT PROPERTIES

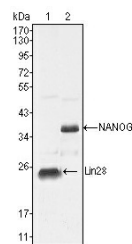
<b>Clonality</b>	Monoclonal
<b>Clone ID</b>	6D1F9
<b>Concentration</b>	1 mg/mL
<b>Conjugation</b>	Unconjugated
<b>Purification</b>	Antibody are purified by protein G affinity chromatography.
<b>Dilution Range</b>	WB 1:500-1:2000 IF 1:200-1:1000 ELISA 1:10000
<b>Formulation</b>	Liquid in 0.01M PBS pH7.4 containing 0.03% Sodium Azide.
<b>Isotype</b>	IgG1
<b>Storage Instruction</b>	Store at -20°C for up to 1 year from the date of receipt, and avoid repeat freeze-thaw cycles.

### TARGET INFORMATION

<b>Gene ID</b>	79727
<b>Gene Symbol</b>	LIN28A
<b>Uniprot ID</b>	LN28A_HUMAN
<b>Immunogen</b>	Purified recombinant fragment of LIN-28 (aa93-209) expressed in E. Coli.
<b>Immunogen Region</b>	93-209 aa
<b>Specificity</b>	LIN-28 Monoclonal Antibody detects endogenous levels of LIN-28 protein.
<b>Immunogen Sequence</b>	



Confocal immunofluorescence analysis of NTERA-2 cells using LIN-28 monoclonal antibody (green). Blue: DAPI fluorescent DNA dye.



Western blot analysis using LIN-28 monoclonal antibody against NTERA-2 cell lysate (1).

This product is suitable for in-vitro studies under the RESEARCH USE ONLY [RUO] licence. This product must not be used as for diagnostic or other medical purposes.  
St John's Laboratory Ltd, Knowledge Dock Business Centre, University Way, London, E16 2RD | Tel: 0208 223 3081