

## Anti-LHX2 antibody [6G2] (STJ98217)

STJ98217

### GENERAL INFORMATION

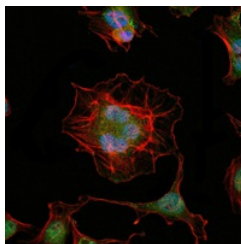
<b>Product Type</b>	Primary antibodies
<b>Short Description</b>	Mouse monoclonal antibody anti-LIM/homeobox protein Lhx2 is suitable for use in Western Blot, Immunofluorescence and ELISA research applications.
<b>Applications</b>	WB/IF/ELISA
<b>Host/Source</b>	Mouse
<b>Reactivity</b>	Human

### PRODUCT PROPERTIES

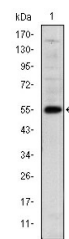
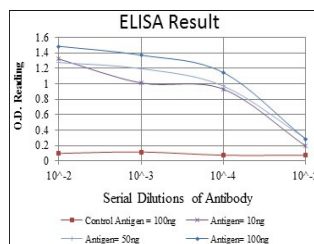
<b>Clonality</b>	Monoclonal
<b>Clone ID</b>	6G2
<b>Concentration</b>	
<b>Conjugation</b>	Unconjugated
<b>Purification</b>	Affinity purification
<b>Dilution Range</b>	WB 1:500-1:2000 IF 1:200-1:1000 ELISA 1:10000
<b>Formulation</b>	Liquid in PBS containing 0.03% Sodium Azide, 0.5% BSA, 50% Glycerol.
<b>Isotype</b>	IgG1
<b>Storage Instruction</b>	Store at -20°C for up to 1 year from the date of receipt, and avoid repeat freeze-thaw cycles.

### TARGET INFORMATION

<b>Gene ID</b>	9355
<b>Gene Symbol</b>	LHX2
<b>Uniprot ID</b>	LHX2_HUMAN
<b>Immunogen</b>	Purified recombinant fragment of human LHX2 expressed in E. Coli.
<b>Immunogen Region</b>	
<b>Specificity</b>	LHX2 Monoclonal Antibody detects endogenous levels of LHX2 protein.
<b>Immunogen Sequence</b>	



Immunofluorescence analysis of HeLa cells using LHX2 monoclonal antibody (green). Blue: DAPI fluorescent DNA dye. Red: Actin filaments have been labeled with Alexa Fluor-555 phalloidin.



Western blot analysis using LHX2 monoclonal antibody against human LHX2 (AA: 200-406) recombinant protein.

This product is suitable for in-vitro studies under the RESEARCH USE ONLY [RUO] licence. This product must not be used as for diagnostic or other medical purposes.  
St John's Laboratory Ltd, Knowledge Dock Business Centre, University Way, London, E16 2RD | Tel: 0208 223 3081