

Anti-LMNA antibody [4E7] (STJ98213)

STJ98213

GENERAL INFORMATION

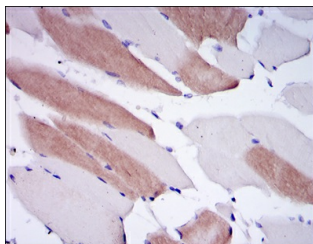
Product Type	Primary antibodies
Short Description	Mouse monoclonal antibody anti-Prelamin-A/C is suitable for use in Western Blot, Immunohistochemistry, Immunofluorescence and ELISA research applications.
Applications	WB/IHC/IF/ELISA
Host/Source	Mouse
Reactivity	Human/Mouse/Rat

PRODUCT PROPERTIES

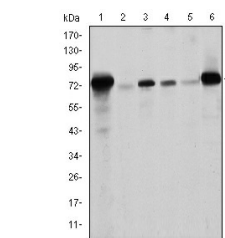
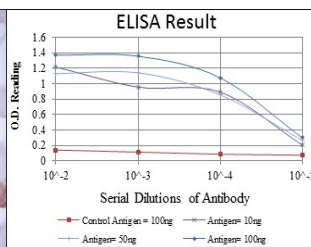
Clonality	Monoclonal
Clone ID	4E7
Concentration	
Conjugation	Unconjugated
Purification	Affinity purification
Dilution Range	WB 1:500-1:2000 IHC 1:200-1:1000 ELISA 1:10000 IF 1:50-200
Formulation	Liquid in PBS containing 0.03% Sodium Azide, 0.5% BSA, 50% Glycerol.
Isotype	IgG1
Storage Instruction	Store at -20°C for up to 1 year from the date of receipt, and avoid repeat freeze-thaw cycles.

TARGET INFORMATION

Gene ID	4000
Gene Symbol	LMNA
Uniprot ID	LMNA_HUMAN
Immunogen	Purified recombinant fragment of human Lamin A expressed in E. Coli.
Immunogen Region	
Specificity	Lamin A Monoclonal Antibody detects endogenous levels of Lamin A protein.
Immunogen Sequence	



Immunohistochemistry analysis of paraffin-embedded human striated muscle tissues with DAB staining using Lamin A monoclonal antibody.



Western blot analysis using Lamin A monoclonal antibody against Raw264.7 (1), PC-12 (2), THP-1 (3), A431 (4), MCF-7 (5) and Jurkat (6) cell lysate.