

Anti-KSHV ORF26 antibody [2F6B8] (STJ98208)

STJ98208

GENERAL INFORMATION

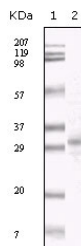
| | |
|--------------------------|--|
| Product Type | Primary antibodies |
| Short Description | Mouse monoclonal antibody anti-KSHV ORF26 is suitable for use in Western Blot and ELISA research applications. |
| Applications | WB/ELISA |
| Host/Source | Mouse |
| Reactivity | Human |

PRODUCT PROPERTIES

| | |
|----------------------------|--|
| Clonality | Monoclonal |
| Clone ID | 2F6B8 |
| Concentration | |
| Conjugation | Unconjugated |
| Purification | Affinity purification |
| Dilution Range | WB 1:500-1:2000 ELISA 1:10000 |
| Formulation | Liquid in PBS containing 0.03% Sodium Azide, 0.5% BSA, 50% Glycerol. |
| Isotype | IgG1 |
| Storage Instruction | Store at -20°C for up to 1 year from the date of receipt, and avoid repeat freeze-thaw cycles. |

TARGET INFORMATION

| | |
|---------------------------|---|
| Gene ID | |
| Gene Symbol | |
| Uniprot ID | |
| Immunogen | Purified recombinant fragment of KSHV ORF26 expressed in E. Coli. |
| Immunogen Region | |
| Specificity | KSHV ORF26 Monoclonal Antibody detects KSHV ORF26 protein. |
| Immunogen Sequence | |



Western blot analysis using KSHV ORF26 monoclonal antibody against TPA induced BCBL-1 cell lysate.

This product is suitable for in-vitro studies under the RESEARCH USE ONLY [RUO] licence. This product must not be used as for diagnostic or other medical purposes.
St John's Laboratory Ltd, Knowledge Dock Business Centre, University Way, London, E16 2RD | Tel: 0208 223 3081