

## Anti-KLHL22 antibody [7B10] (STJ98205)

STJ98205

### GENERAL INFORMATION

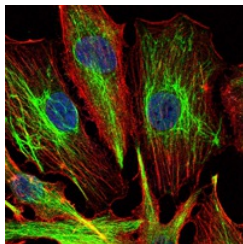
<b>Product Type</b>	Primary antibodies
<b>Short Description</b>	Mouse monoclonal antibody anti-Kelch-like protein 22 is suitable for use in Western Blot, Immunofluorescence and ELISA research applications.
<b>Applications</b>	WB/IF/ELISA
<b>Host/Source</b>	Mouse
<b>Reactivity</b>	Human

### PRODUCT PROPERTIES

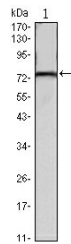
<b>Clonality</b>	Monoclonal
<b>Clone ID</b>	7B10
<b>Concentration</b>	
<b>Conjugation</b>	Unconjugated
<b>Purification</b>	Affinity purification
<b>Dilution Range</b>	WB 1:500-1:2000 IF 1:200-1:1000 ELISA 1:10000
<b>Formulation</b>	Liquid in PBS containing 0.03% Sodium Azide, 0.5% BSA, 50% Glycerol.
<b>Isotype</b>	IgG1
<b>Storage Instruction</b>	Store at -20°C for up to 1 year from the date of receipt, and avoid repeat freeze-thaw cycles.

### TARGET INFORMATION

<b>Gene ID</b>	84861
<b>Gene Symbol</b>	KLHL22
<b>Uniprot ID</b>	KLH22_HUMAN
<b>Immunogen</b>	Purified recombinant fragment of human KLHL22 expressed in E. Coli.
<b>Immunogen Region</b>	
<b>Specificity</b>	KLHL22 Monoclonal Antibody detects endogenous levels of KLHL22 protein.
<b>Immunogen Sequence</b>	



Immunofluorescence analysis of U251 cells using KLHL22 monoclonal antibody (green). Blue: DRAQ5 fluorescent DNA dye. Red: Actin filaments have been labeled with Alexa Fluor-555 phalloidin.



Western blot analysis using KLHL22 monoclonal antibody against mouse brain tissues lysate.