

Anti-KLHL21 antibody [2H4] (STJ98204)

STJ98204

GENERAL INFORMATION

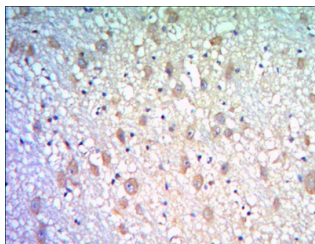
Product Type	Primary antibodies
Short Description	Mouse monoclonal antibody anti-Kelch-like protein 21 is suitable for use in Western Blot, Immunohistochemistry, Immunofluorescence and ELISA research applications.
Applications	WB/IHC/IF/ELISA
Host/Source	Mouse
Reactivity	Human

PRODUCT PROPERTIES

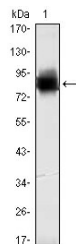
Clonality	Monoclonal
Clone ID	2H4
Concentration	
Conjugation	Unconjugated
Purification	Affinity purification
Dilution Range	WB 1:500-1:2000 IHC 1:200-1:1000 ELISA 1:10000 IF 1:50-200
Formulation	Liquid in PBS containing 0.03% Sodium Azide, 0.5% BSA, 50% Glycerol.
Isotype	IgG1
Storage Instruction	Store at -20°C for up to 1 year from the date of receipt, and avoid repeat freeze-thaw cycles.

TARGET INFORMATION

Gene ID	9903
Gene Symbol	KLHL21
Uniprot ID	KLH21_HUMAN
Immunogen	Purified recombinant fragment of human KLHL21 expressed in E. Coli.
Immunogen Region	
Specificity	KLHL21 Monoclonal Antibody detects endogenous levels of KLHL21 protein.
Immunogen Sequence	



Immunohistochemistry analysis of paraffin-embedded human brain tissues with DAB staining using KLHL21 monoclonal antibody.



Western blot analysis using KLHL21 monoclonal antibody against recombinant KLHL21 protein (1).

This product is suitable for in-vitro studies under the RESEARCH USE ONLY [RUO] licence. This product must not be used as for diagnostic or other medical purposes.
St John's Laboratory Ltd, Knowledge Dock Business Centre, University Way, London, E16 2RD | Tel: 0208 223 3081