

Anti-KLHL11 antibody [1B9C1] (STJ98201)

STJ98201

GENERAL INFORMATION

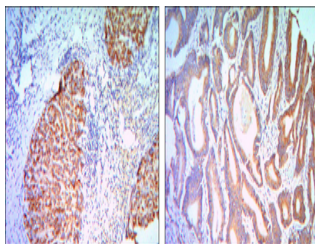
Product Type	Primary antibodies
Short Description	Mouse monoclonal antibody anti-Kelch-like protein 11 is suitable for use in Western Blot, Immunohistochemistry, Immunofluorescence and ELISA research applications.
Applications	WB/IHC/IF/ELISA
Host/Source	Mouse
Reactivity	Human

PRODUCT PROPERTIES

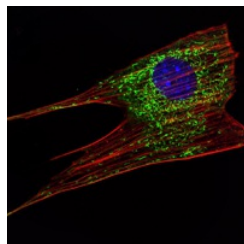
Clonality	Monoclonal
Clone ID	1B9C1
Concentration	
Conjugation	Unconjugated
Purification	Affinity purification
Dilution Range	WB 1:500-1:2000 IHC 1:200-1:1000 IF 1:200-1:1000 ELISA 1:10000
Formulation	Liquid in PBS containing 0.03% Sodium Azide, 0.5% BSA, 50% Glycerol.
Isotype	IgG1
Storage Instruction	Store at -20°C for up to 1 year from the date of receipt, and avoid repeat freeze-thaw cycles.

TARGET INFORMATION

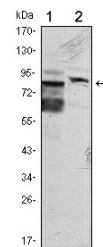
Gene ID	55175
Gene Symbol	KLHL11
Uniprot ID	KLH11_HUMAN
Immunogen	Purified recombinant fragment of human KLHL11 expressed in E. Coli.
Immunogen Region	
Specificity	KLHL11 Monoclonal Antibody detects endogenous levels of KLHL11 protein.
Immunogen Sequence	



Immunohistochemistry analysis of paraffin-embedded liver cancer (right) and colon cancer tissues (left) with DAB staining using KLHL11 monoclonal antibody.



Immunofluorescence analysis of NIH/3T3 cells using KLHL11 monoclonal antibody (green). Blue: DAPI fluorescent DNA dye. Red: Actin filaments have been labeled with Alexa Fluor-555 phalloidin.



Western blot analysis using KLHL11 monoclonal antibody against HeLa (1) and MCF-7 (2) cell lysate.