

Anti-KLF15 antibody [2G8] (STJ98198)

STJ98198

GENERAL INFORMATION

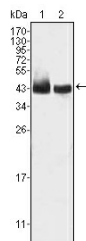
Product Type	Primary antibodies
Short Description	Mouse monoclonal antibody anti-Krueppel-like factor 15 is suitable for use in Western Blot and ELISA research applications.
Applications	WB/ELISA
Host/Source	Mouse
Reactivity	Human

PRODUCT PROPERTIES

Clonality	Monoclonal
Clone ID	2G8
Concentration	
Conjugation	Unconjugated
Purification	Affinity purification
Dilution Range	WB 1:500-1:2000 ELISA 1:10000
Formulation	Liquid in PBS containing 0.03% Sodium Azide, 0.5% BSA, 50% Glycerol.
Isotype	IgG1
Storage Instruction	Store at -20°C for up to 1 year from the date of receipt, and avoid repeat freeze-thaw cycles.

TARGET INFORMATION

Gene ID	28999
Gene Symbol	KLF15
Uniprot ID	KLF15_HUMAN
Immunogen	Purified recombinant fragment of human KLF15 expressed in E. Coli.
Immunogen Region	
Specificity	KLF15 Monoclonal Antibody detects endogenous levels of KLF15 protein.
Immunogen Sequence	



Western blot analysis using KLF15 monoclonal antibody against HepG2 (1) and SMMC-7721 (2) cell lysate.

This product is suitable for in-vitro studies under the RESEARCH USE ONLY [RUO] licence. This product must not be used as for diagnostic or other medical purposes.
St John's Laboratory Ltd, Knowledge Dock Business Centre, University Way, London, E16 2RD | Tel: 0208 223 3081