

Anti-KIF22 antibody [5F3] (STJ98196)

STJ98196

GENERAL INFORMATION

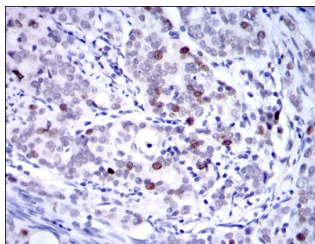
Product Type	Primary antibodies
Short Description	Mouse monoclonal antibody anti-Kinesin-like protein KIF22 is suitable for use in Western Blot, Immunohistochemistry, Immunofluorescence and ELISA research applications.
Applications	WB/IHC/IF/ELISA
Host/Source	Mouse
Reactivity	Human

PRODUCT PROPERTIES

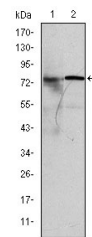
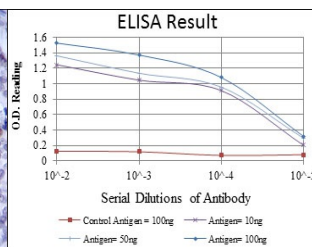
Clonality	Monoclonal
Clone ID	5F3
Concentration	
Conjugation	Unconjugated
Purification	Affinity purification
Dilution Range	WB 1:500-1:2000 IHC 1:200-1:1000 ELISA 1:10000 IF 1:50-200
Formulation	Liquid in PBS containing 0.03% Sodium Azide, 0.5% BSA, 50% Glycerol.
Isotype	IgG1
Storage Instruction	Store at -20°C for up to 1 year from the date of receipt, and avoid repeat freeze-thaw cycles.

TARGET INFORMATION

Gene ID	3835
Gene Symbol	KIF22
Uniprot ID	KIF22_HUMAN
Immunogen	Purified recombinant fragment of human KID expressed in E. Coli.
Immunogen Region	
Specificity	KID Monoclonal Antibody detects endogenous levels of KID protein.
Immunogen Sequence	



Immunohistochemistry analysis of paraffin-embedded cervical cancer tissues with DAB staining using KID monoclonal antibody.



Western blot analysis using KID monoclonal antibody against MCF-7 (1) and HeLa (2) cell lysate.

This product is suitable for in-vitro studies under the RESEARCH USE ONLY [RUO] licence. This product must not be used as for diagnostic or other medical purposes.
St John's Laboratory Ltd, Knowledge Dock Business Centre, University Way, London, E16 2RD | Tel: 0208 223 3081