

Anti-ISL1 antibody [1B1] (STJ98185)

STJ98185

GENERAL INFORMATION

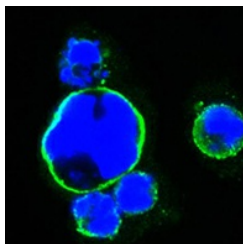
Product Type	Primary antibodies
Short Description	Mouse monoclonal antibody anti-Insulin gene enhancer protein ISL-1 is suitable for use in Western Blot, Immunofluorescence and ELISA research applications.
Applications	WB/IF/ELISA
Host/Source	Mouse
Reactivity	Human

PRODUCT PROPERTIES

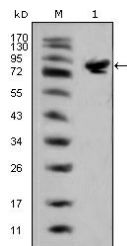
Clonality	Monoclonal
Clone ID	1B1
Concentration	
Conjugation	Unconjugated
Purification	Affinity purification
Dilution Range	WB 1:500-1:2000 IF 1:200-1:1000 ELISA 1:10000
Formulation	Liquid in PBS containing 0.03% Sodium Azide, 0.5% BSA, 50% Glycerol.
Isotype	IgG1
Storage Instruction	Store at -20°C for up to 1 year from the date of receipt, and avoid repeat freeze-thaw cycles.

TARGET INFORMATION

Gene ID	3670
Gene Symbol	ISL1
Uniprot ID	ISL1_HUMAN
Immunogen	Purified recombinant fragment of human Islet-1 expressed in E. Coli.
Immunogen Region	
Specificity	Islet-1 Monoclonal Antibody detects endogenous levels of Islet-1 protein.
Immunogen Sequence	



Confocal immunofluorescence analysis of HEK293 cells transfected with full-length Islet-1-hlgGfc using Islet-1 monoclonal antibody (green). Blue: DRAQ5 fluorescent DNA dye.



Western blot analysis using Islet-1 monoclonal antibody against full-length Islet-1 (aa1-349)-hlgGfc transfected HEK293 cell lysate (1).

This product is suitable for in-vitro studies under the RESEARCH USE ONLY [RUO] licence. This product must not be used as for diagnostic or other medical purposes.
St John's Laboratory Ltd, Knowledge Dock Business Centre, University Way, London, E16 2RD | Tel: 0208 223 3081