

## Anti-ISL1 antibody [1H9] (STJ98184)

STJ98184

### GENERAL INFORMATION

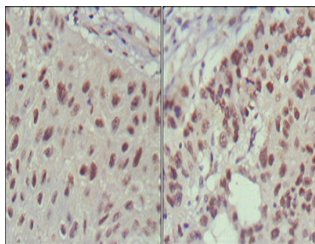
|                          |   |
|--------------------------|---|
| <b>Product Type</b>      | Primary antibodies  |
| <b>Short Description</b> | Mouse monoclonal antibody anti-Insulin gene enhancer protein ISL-1 is suitable for use in Western Blot, Immunohistochemistry, Immunofluorescence and ELISA research applications. |
| <b>Applications</b>      | WB/IHC/IF/ELISA   |
| <b>Host/Source</b>       | Mouse   |
| <b>Reactivity</b>        | Human   |

### PRODUCT PROPERTIES

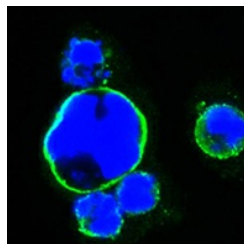
|                            |  |
|----------------------------|--|
| <b>Clonality</b>           | Monoclonal   |
| <b>Clone ID</b>            | 1H9  |
| <b>Concentration</b>       |  |
| <b>Conjugation</b>         | Unconjugated   |
| <b>Purification</b>        | Affinity purification  |
| <b>Dilution Range</b>      | WB 1:500-1:2000<br>IHC 1:200-1:1000<br>IF 1:200-1:1000<br>ELISA 1:10000                        |
| <b>Formulation</b>         | Liquid in PBS containing 0.03% Sodium Azide, 0.5% BSA, 50% Glycerol.                           |
| <b>Isotype</b>             | IgG1   |
| <b>Storage Instruction</b> | Store at -20°C for up to 1 year from the date of receipt, and avoid repeat freeze-thaw cycles. |

### TARGET INFORMATION

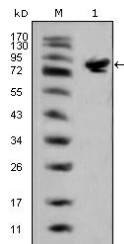
|                           |   |
|---------------------------|---|
| <b>Gene ID</b>            | 3670  |
| <b>Gene Symbol</b>        | ISL1  |
| <b>Uniprot ID</b>         | ISL1_HUMAN  |
| <b>Immunogen</b>          | Purified recombinant fragment of human Islet-1 expressed in E. Coli.      |
| <b>Immunogen Region</b>   |   |
| <b>Specificity</b>        | Islet-1 Monoclonal Antibody detects endogenous levels of Islet-1 protein. |
| <b>Immunogen Sequence</b> |   |



Immunohistochemistry analysis of paraffin-embedded human lung cancer (left) and cervical carcinoma (right), showing nuclear localization with DAB staining using Islet-1 monoclonal antibody.



Confocal immunofluorescence analysis of HEK293 cells transfected with full-length ISL1-hlgGfc using Islet-1 monoclonal antibody (green). Blue: DRAQ5 fluorescent DNA dye.



Western blot analysis using Islet-1 monoclonal antibody against full-length ISL1 (aa1-349) -hlgGfc transfected HEK293 cell lysate (1).

This product is suitable for in-vitro studies under the RESEARCH USE ONLY [RUO] licence. This product must not be used as for diagnostic or other medical purposes.  
St John's Laboratory Ltd, Knowledge Dock Business Centre, University Way, London, E16 2RD | Tel: 0208 223 3081