

Anti-ERN1 antibody (282-433 aa) [9F2] (STJ98183)

STJ98183

GENERAL INFORMATION

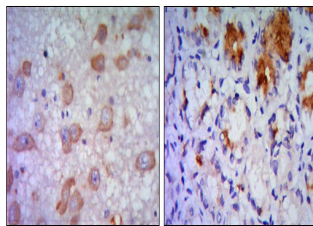
Product Type	Primary antibodies
Short Description	Mouse monoclonal antibody anti-Serine/threonine-protein kinase/endoribonuclease IRE1 (282-433 aa) is suitable for use in Western Blot, Immunohistochemistry, Immunofluorescence and ELISA research applications.
Applications	WB/IHC/IF/ELISA
Host/Source	Mouse
Reactivity	Human

PRODUCT PROPERTIES

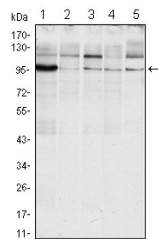
Clonality	Monoclonal
Clone ID	9F2
Concentration	
Conjugation	Unconjugated
Purification	Affinity purification
Dilution	WB 1:500-1:2000
Range	IHC 1:200-1:1000 ELISA 1:10000 IF 1:50-200
Formulation	Liquid in PBS containing 0.03% Sodium Azide, 0.5% BSA, 50% Glycerol.
Isotype	IgG1
Storage Instruction	Store at -20°C for up to 1 year from the date of receipt, and avoid repeat freeze-thaw cycles.

TARGET INFORMATION

Gene ID	2081
Gene Symbol	ERN1
Uniprot ID	ERN1_HUMAN
Immunogen	Purified recombinant fragment of human IRE1 Alpha (aa282-433) expressed in E. Coli.
Immunogen	282-433 aa
Region	
Specificity	IRE1 Alpha Monoclonal Antibody detects endogenous levels of IRE1 Alpha protein.
Immunogen Sequence	



Immunohistochemistry analysis of paraffin-embedded human brain tissue (A) and stomach tissue (B), showing cytoplasmic localization with DAB staining using IRE1 Alpha monoclonal antibody.



Western blot analysis using IRE1 Alpha monoclonal antibody against Raji (1), A431 (2), Jurkat (3), HeLa (4) and HEK293 (5) cell lysate.