

## Anti-IL1B antibody [3A6] (STJ98171)

STJ98171

### GENERAL INFORMATION

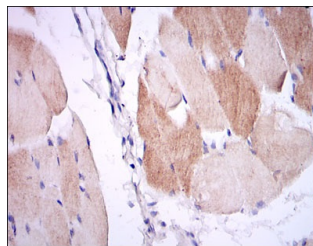
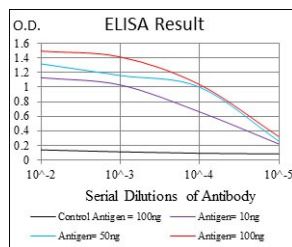
<b>Product Type</b>	Primary antibodies
<b>Short Description</b>	Mouse monoclonal antibody anti-Interleukin-1 beta is suitable for use in Western Blot, Immunohistochemistry, Immunofluorescence and ELISA research applications.
<b>Applications</b>	WB/IHC/IF/ELISA
<b>Host/Source</b>	Mouse
<b>Reactivity</b>	Human

### PRODUCT PROPERTIES

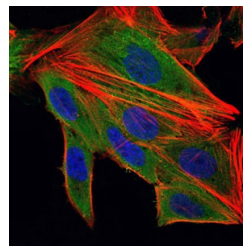
<b>Clonality</b>	Monoclonal
<b>Clone ID</b>	3A6
<b>Concentration</b>	
<b>Conjugation</b>	Unconjugated
<b>Purification</b>	Affinity purification
<b>Dilution Range</b>	WB 1:500-1:2000 IHC 1:200-1:1000 IF 1:200-1:1000 ELISA 1:10000
<b>Formulation</b>	Liquid in PBS containing 0.03% Sodium Azide, 0.5% BSA, 50% Glycerol.
<b>Isotype</b>	IgG1
<b>Storage Instruction</b>	Store at -20°C for up to 1 year from the date of receipt, and avoid repeat freeze-thaw cycles.

### TARGET INFORMATION

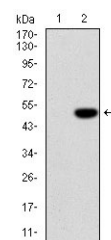
<b>Gene ID</b>	3553
<b>Gene Symbol</b>	IL1B
<b>Uniprot ID</b>	IL1B_HUMAN
<b>Immunogen</b>	Purified recombinant fragment of human IL-1 Beta expressed in E. Coli.
<b>Immunogen Region</b>	
<b>Specificity</b>	IL-1 Beta Monoclonal Antibody detects endogenous levels of IL-1 Beta protein.
<b>Immunogen Sequence</b>	



Immunohistochemistry analysis of paraffin-embedded muscle tissues with DAB staining using IL-1 Beta monoclonal antibody.



Immunofluorescence analysis of HepG2 cells using IL-1 Beta monoclonal antibody (green). Blue: DRAQ5 fluorescent DNA dye. Red: Actin filaments have been labeled with Alexa Fluor-555 phalloidin.



Western blot analysis using IL-1 Beta monoclonal antibody against HEK293 (1) and IL-1 Beta-hlgGfC transfected HEK293 (2) cell lysate.