

Anti-IGFBP2 antibody (180-328 aa) [1F6F6] (STJ98157)

STJ98157

GENERAL INFORMATION

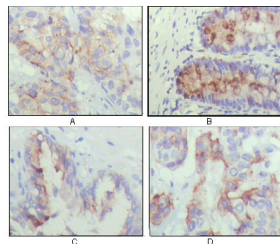
Product Type	Primary antibodies
Short Description	Mouse monoclonal antibody anti-Insulin-like growth factor-binding protein 2 (180-328 aa) is suitable for use in Western Blot, Immunohistochemistry, Immunofluorescence and ELISA research applications.
Applications	WB/IHC/IF/ELISA
Host/Source	Mouse
Reactivity	Human

PRODUCT PROPERTIES

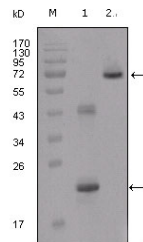
Clonality	Monoclonal
Clone ID	1F6F6
Concentration	
Conjugation	Unconjugated
Purification	Affinity purification
Dilution	WB 1:500-1:2000
Range	IHC 1:200-1:1000 ELISA 1:10000 IF 1:50-200
Formulation	Liquid in PBS containing 0.03% Sodium Azide, 0.5% BSA, 50% Glycerol.
Isotype	IgG1
Storage	Store at -20°C for up to 1 year from the date of receipt, and avoid repeat freeze-thaw cycles.
Instruction	

TARGET INFORMATION

Gene ID	3485
Gene Symbol	IGFBP2
Uniprot ID	IBP2_HUMAN
Immunogen	Purified recombinant fragment of protein IGFBP2 (aa180-328) expressed in E. Coli.
Immunogen	180-328 aa
Region	
Specificity	IGFBP2 Monoclonal Antibody detects endogenous levels of IGFBP2 protein.
Immunogen	
Sequence	



Immunohistochemistry analysis of paraffin-embedded human lung cancer (A), rectum (B), prostate (C), colon cancer (D) showing cytoplasmic localization with DAB staining using IGFBP2 monoclonal antibody.



Western blot analysis using IGFBP2 monoclonal antibody against truncated IGFBP2-His recombinant protein (1) and truncated IGFBP2 (aa40-328) -hlgGf transfected CHO-K1 cell lysate (2).