

Anti-HFE antibody [3F1] (STJ98132)

STJ98132

GENERAL INFORMATION

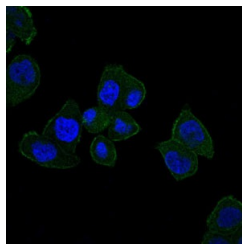
Product Type	Primary antibodies
Short Description	Mouse monoclonal antibody anti-Hereditary hemochromatosis protein is suitable for use in Western Blot, Immunofluorescence and ELISA research applications.
Applications	WB/IF/ELISA
Host/Source	Mouse
Reactivity	Human

PRODUCT PROPERTIES

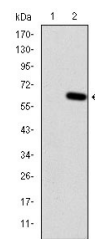
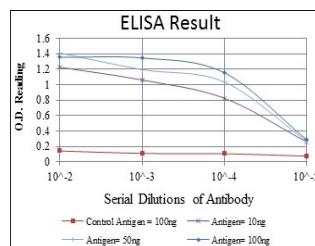
Clonality	Monoclonal
Clone ID	3F1
Concentration	
Conjugation	Unconjugated
Purification	Affinity purification
Dilution Range	WB 1:500-1:2000 IF 1:200-1:1000 ELISA 1:10000
Formulation	Liquid in PBS containing 0.03% Sodium Azide, 0.5% BSA, 50% Glycerol.
Isotype	IgG1
Storage Instruction	Store at -20°C for up to 1 year from the date of receipt, and avoid repeat freeze-thaw cycles.

TARGET INFORMATION

Gene ID	3077
Gene Symbol	HFE
Uniprot ID	HFE_HUMAN
Immunogen	Purified recombinant fragment of human HFE expressed in E. Coli.
Immunogen Region	
Specificity	HFE Monoclonal Antibody detects endogenous levels of HFE protein.
Immunogen Sequence	



Immunofluorescence analysis of HepG2 cells using HFE monoclonal antibody (green). Blue: DAPI fluorescent DNA dye.



Western blot analysis using HFE monoclonal antibody against HEK293 (1) and HFE-hlgGc transfected HEK293 (2) cell lysate.