

Anti-GPI antibody [1B7D7] (STJ98114)

STJ98114

GENERAL INFORMATION

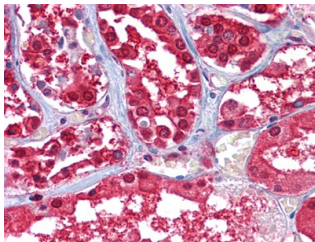
Product Type	Primary antibodies
Short Description	Mouse monoclonal antibody anti-Glucose-6-phosphate isomerase is suitable for use in Western Blot, Immunohistochemistry, Immunofluorescence and ELISA research applications.
Applications	WB/IHC/IF/ELISA
Host/Source	Mouse
Reactivity	Human

PRODUCT PROPERTIES

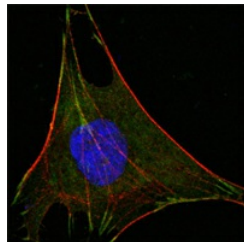
Clonality	Monoclonal
Clone ID	1B7D7
Concentration	
Conjugation	Unconjugated
Purification	Affinity purification
Dilution Range	WB 1:500-1:2000 IHC 1:200-1:1000 IF 1:200-1:1000 ELISA 1:10000
Formulation	Liquid in PBS containing 0.03% Sodium Azide, 0.5% BSA, 50% Glycerol.
Isotype	IgG1
Storage Instruction	Store at -20°C for up to 1 year from the date of receipt, and avoid repeat freeze-thaw cycles.

TARGET INFORMATION

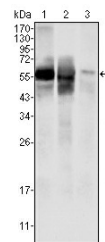
Gene ID	2821
Gene Symbol	GPI
Uniprot ID	G6PI_HUMAN
Immunogen	Purified recombinant fragment of human GPI expressed in E. Coli.
Immunogen Region	
Specificity	GPI Monoclonal Antibody detects endogenous levels of GPI protein.
Immunogen Sequence	



Immunohistochemistry analysis of paraffin-embedded human kidney tissues with AEC staining using GPI monoclonal antibody.



Confocal immunofluorescence analysis of L-02 cells using GPI monoclonal antibody (green). Red: Actin filaments have been labeled with DY-554 phalloidin. Blue: DRAQ5 fluorescent DNA dye.



Western blot analysis using GPI monoclonal antibody against HepG2 (1), SMMC-7721 (2) cell lysate and rat liver tissues lysate (3).