

Anti-MS4A1 antibody [1E5] (STJ98109)

STJ98109

GENERAL INFORMATION

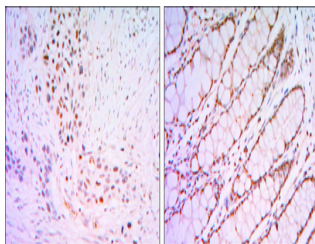
Product Type	Primary antibodies
Short Description	Mouse monoclonal antibody anti-B-lymphocyte antigen CD20 is suitable for use in Western Blot, Immunohistochemistry, Immunofluorescence and ELISA research applications.
Applications	WB/IHC/IF/ELISA
Host/Source	Mouse
Reactivity	Human

PRODUCT PROPERTIES

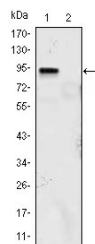
Clonality	Monoclonal
Clone ID	1E5
Concentration	
Conjugation	Unconjugated
Purification	Affinity purification
Dilution Range	WB 1:500-1:2000 IHC 1:200-1:1000 ELISA 1:10000 IF 1:50-200
Formulation	Liquid in PBS containing 0.03% Sodium Azide, 0.5% BSA, 50% Glycerol.
Isotype	IgG1
Storage Instruction	Store at -20°C for up to 1 year from the date of receipt, and avoid repeat freeze-thaw cycles.

TARGET INFORMATION

Gene ID	931
Gene Symbol	MS4A1
Uniprot ID	CD20_HUMAN
Immunogen	Purified recombinant fragment of human GKLF expressed in E. Coli.
Immunogen Region	
Specificity	GKLF Monoclonal Antibody detects endogenous levels of GKLF protein.
Immunogen Sequence	



Immunohistochemistry analysis of paraffin-embedded lung cancer tissues (left) and human rectum tissues (right) with DAB staining using GKLF monoclonal antibody.



Western blot analysis using GKLF monoclonal antibody against KLF4 (aa2-470) -hlgGfc transfected HEK293 (1) and HEK293 (2) cell lysate.