

Anti-G6PD antibody [5E12] (STJ98093)

STJ98093

GENERAL INFORMATION

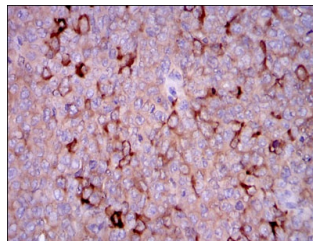
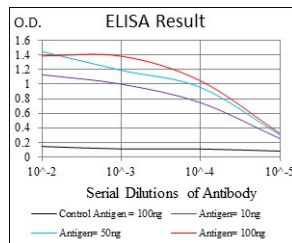
Product Type	Primary antibodies
Short Description	Mouse monoclonal antibody anti-Glucose-6-phosphate 1-dehydrogenase is suitable for use in Western Blot, Immunohistochemistry, Immunofluorescence, Flow Cytometry and ELISA research applications.
Applications	WB/IHC/IF/FC/ELISA
Host/Source	Mouse
Reactivity	Human

PRODUCT PROPERTIES

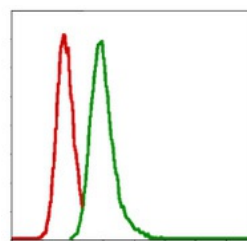
Clonality	Monoclonal
Clone ID	5E12
Concentration	
Conjugation	Unconjugated
Purification	Affinity purification
Dilution Range	WB 1:500-1:2000 IHC 1:200-1:1000 FC 1:200-1:400 ELISA 1:10000 IF 1:50-200
Formulation	Liquid in PBS containing 0.03% Sodium Azide, 0.5% BSA, 50% Glycerol.
Isotype	IgG1
Storage	Store at -20°C for up to 1 year from the date of receipt, and avoid repeat freeze-thaw cycles.
Instruction	

TARGET INFORMATION

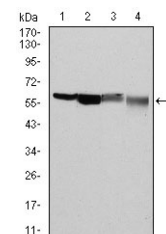
Gene ID	2539
Gene Symbol	G6PD
Uniprot ID	G6PD_HUMAN
Immunogen	Purified recombinant fragment of human G6PD expressed in E. Coli.
Immunogen Region	
Specificity	G6PD Monoclonal Antibody detects endogenous levels of G6PD protein.
Immunogen Sequence	



Immunohistochemistry analysis of paraffin-embedded ovarian cancer tissues with DAB staining using G6PD monoclonal antibody.



Flow cytometric analysis of MCF-7 cells using G6PD monoclonal antibody (green) and negative control (red).



Western blot analysis using G6PD monoclonal antibody against HeLa (1), MCF-7 (2), Jurkat (3) and K562 (4) cell lysate.

This product is suitable for in-vitro studies under the RESEARCH USE ONLY [RUO] licence. This product must not be used as for diagnostic or other medical purposes.
St John's Laboratory Ltd, Knowledge Dock Business Centre, University Way, London, E16 2RD | Tel: 0208 223 3081