

Anti-ETS1 antibody [10D2] (STJ98058)

STJ98058

GENERAL INFORMATION

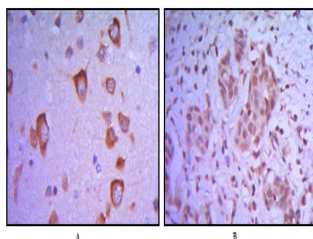
Product Type	Primary antibodies
Short Description	Mouse monoclonal antibody anti-Protein C-ets-1 is suitable for use in Western Blot, Immunohistochemistry, Immunofluorescence and ELISA research applications.
Applications	WB/IHC/IF/ELISA
Host/Source	Mouse
Reactivity	Human

PRODUCT PROPERTIES

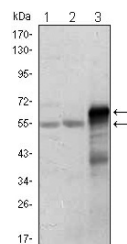
Clonality	Monoclonal
Clone ID	10D2
Concentration	
Conjugation	Unconjugated
Purification	Affinity purification
Dilution Range	WB 1:500-1:2000 IHC 1:200-1:1000 ELISA 1:10000 IF 1:50-200
Formulation	Liquid in PBS containing 0.03% Sodium Azide, 0.5% BSA, 50% Glycerol.
Isotype	IgG1
Storage Instruction	Store at -20°C for up to 1 year from the date of receipt, and avoid repeat freeze-thaw cycles.

TARGET INFORMATION

Gene ID	2113
Gene Symbol	ETS1
Uniprot ID	ETS1_HUMAN
Immunogen	Purified recombinant fragment of human ETS1 expressed in E. Coli.
Immunogen Region	
Specificity	ETS1 Monoclonal Antibody detects endogenous levels of ETS1 protein.
Immunogen Sequence	



Immunohistochemistry analysis of paraffin-embedded human brain tissue (A) and breast tumor (B) with AEC staining using ETS1 monoclonal antibody.



Western blot analysis using ETS1 monoclonal antibody against Jurkat (1), HepG2 (2) and ETS1-hlgGf transfected HEK293 (3) cell lysate.