

Anti-EPHB6 antibody (601-750 aa) [2A6B9] (STJ98038)

STJ98038

GENERAL INFORMATION

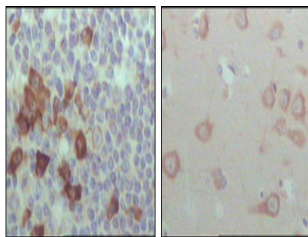
Product Type	Primary antibodies
Short Description	Mouse monoclonal antibody anti-Ephrin type-B receptor 6 (601-750 aa) is suitable for use in Western Blot, Immunohistochemistry, Immunofluorescence and ELISA research applications.
Applications	WB/IHC/IF/ELISA
Host/Source	Mouse
Reactivity	Human

PRODUCT PROPERTIES

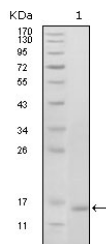
Clonality	Monoclonal
Clone ID	2A6B9
Concentration	
Conjugation	Unconjugated
Purification	Affinity purification
Dilution Range	WB 1:500-1:2000 IHC 1:200-1:1000 ELISA 1:10000 IF 1:50-200
Formulation	Liquid in PBS containing 0.03% Sodium Azide, 0.5% BSA, 50% Glycerol.
Isotype	IgG1
Storage Instruction	Store at -20°C for up to 1 year from the date of receipt, and avoid repeat freeze-thaw cycles.

TARGET INFORMATION

Gene ID	2051
Gene Symbol	EPHB6
Uniprot ID	EPHB6_HUMAN
Immunogen	Purified recombinant fragment of EphB6 (aa601-750) expressed in E. Coli.
Immunogen Region	601-750 aa
Specificity	EphB6 Monoclonal Antibody detects endogenous levels of EphB6 protein.
Immunogen Sequence	



Immunohistochemistry analysis of paraffin-embedded human lymph node (left) and brain (right), showing cytoplasmic localization with DAB staining using EphB6 monoclonal antibody.



Western blot analysis using EphB6 monoclonal antibody against truncated EphB6 recombinant protein (1).