

Anti-EPHB2 antibody (17-200 aa) [2D12C6] (STJ98032)

STJ98032

GENERAL INFORMATION

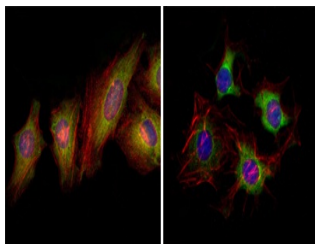
Product Type	Primary antibodies
Short Description	Mouse monoclonal antibody anti-Ephrin type-B receptor 2 (17-200 aa) is suitable for use in Western Blot, Immunofluorescence and ELISA research applications.
Applications	WB/IF/ELISA
Host/Source	Mouse
Reactivity	Human

PRODUCT PROPERTIES

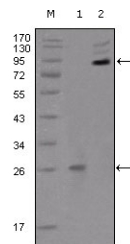
Clonality	Monoclonal
Clone ID	2D12C6
Concentration	
Conjugation	Unconjugated
Purification	Affinity purification
Dilution Range	WB 1:500-1:2000 IF 1:200-1:1000 ELISA 1:10000
Formulation	Liquid in PBS containing 0.03% Sodium Azide, 0.5% BSA, 50% Glycerol.
Isotype	IgG2b
Storage Instruction	Store at -20°C for up to 1 year from the date of receipt, and avoid repeat freeze-thaw cycles.

TARGET INFORMATION

Gene ID	2048
Gene Symbol	EPHB2
Uniprot ID	EPHB2_HUMAN
Immunogen	Purified recombinant fragment of EphB2 (aa17-200) expressed in E. Coli.
Immunogen Region	17-200 aa
Specificity	EphB2 Monoclonal Antibody detects endogenous levels of EphB2 protein.
Immunogen Sequence	



Immunofluorescence analysis of Hela (left) and HepG2 (right) cells using EphB2 monoclonal antibody (green). Red: Actin filaments have been labeled with DY-554 phalloidin. Blue: DRAQ5 fluorescent DNA dye.



Western blot analysis using EphB2 monoclonal antibody against truncated EphB2 recombinant protein (1) and extracellular EphB2 (aa19-476) -hlgFc transfected CHO-K1 cell lysate (2).