

## Anti-EPHA8 antibody (70-150 aa) [9A12D8] (STJ98030)

STJ98030

### GENERAL INFORMATION

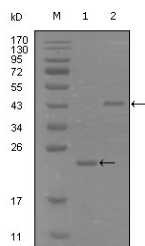
|                          |                                                                                                                                          |
|--------------------------|------------------------------------------------------------------------------------------------------------------------------------------|
| <b>Product Type</b>      | Primary antibodies                                                                                                                       |
| <b>Short Description</b> | Mouse monoclonal antibody anti-Ephrin type-A receptor 8 (70-150 aa) is suitable for use in Western Blot and ELISA research applications. |
| <b>Applications</b>      | WB/ELISA                                                                                                                                 |
| <b>Host/Source</b>       | Mouse                                                                                                                                    |
| <b>Reactivity</b>        | Human                                                                                                                                    |

### PRODUCT PROPERTIES

|                            |                                                                                                |
|----------------------------|------------------------------------------------------------------------------------------------|
| <b>Clonality</b>           | Monoclonal                                                                                     |
| <b>Clone ID</b>            | 9A12D8                                                                                         |
| <b>Concentration</b>       |                                                                                                |
| <b>Conjugation</b>         | Unconjugated                                                                                   |
| <b>Purification</b>        | Affinity purification                                                                          |
| <b>Dilution Range</b>      | WB 1:500-1:2000<br>ELISA 1:10000                                                               |
| <b>Formulation</b>         | Liquid in PBS containing 0.03% Sodium Azide, 0.5% BSA, 50% Glycerol.                           |
| <b>Isotype</b>             | IgG1                                                                                           |
| <b>Storage Instruction</b> | Store at -20°C for up to 1 year from the date of receipt, and avoid repeat freeze-thaw cycles. |

### TARGET INFORMATION

|                           |                                                                         |
|---------------------------|-------------------------------------------------------------------------|
| <b>Gene ID</b>            | 2046                                                                    |
| <b>Gene Symbol</b>        | EPHA8                                                                   |
| <b>Uniprot ID</b>         | EPHA8_HUMAN                                                             |
| <b>Immunogen</b>          | Purified recombinant fragment of EphA8 (aa70-150) expressed in E. Coli. |
| <b>Immunogen Region</b>   | 70-150 aa                                                               |
| <b>Specificity</b>        | EphA8 Monoclonal Antibody detects endogenous levels of EphA8 protein.   |
| <b>Immunogen Sequence</b> |                                                                         |



Western blot analysis using EphA8 monoclonal antibody against truncated Trx-EphA8 recombinant protein (1) and truncated MBP-EphA8 (aa70-150) recombinant protein (2).