

Anti-EPHA1 antibody [5D2] (STJ98022)

STJ98022

GENERAL INFORMATION

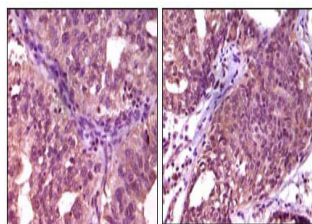
Product Type	Primary antibodies
Short Description	Mouse monoclonal antibody anti-Ephrin type-A receptor 1 is suitable for use in Western Blot, Immunohistochemistry, Immunofluorescence and ELISA research applications.
Applications	WB/IHC/IF/ELISA
Host/Source	Mouse
Reactivity	Human

PRODUCT PROPERTIES

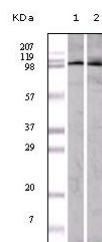
Clonality	Monoclonal
Clone ID	5D2
Concentration	1 mg/mL
Conjugation	Unconjugated
Purification	Affinity purification
Dilution Range	WB 1:500-1:2000 IHC 1:200-1:1000 ELISA 1:10000 IF 1:50-200
Formulation	Liquid in PBS containing 0.03% Sodium Azide.
Isotype	IgG1
Storage Instruction	Store at -20°C for up to 1 year from the date of receipt, and avoid repeat freeze-thaw cycles.

TARGET INFORMATION

Gene ID	2041
Gene Symbol	EPHA1
Uniprot ID	EPHA1_HUMAN
Immunogen	Purified recombinant fragment of EphA1 expressed in E. Coli.
Immunogen Region	
Specificity	EphA1 Monoclonal Antibody detects endogenous levels of EphA1 protein.
Immunogen Sequence	



Immunohistochemistry analysis of paraffin-embedded human ovary carcinoma (left) and breast carcinoma (right) showing cytoplasmic localization with DAB staining using EphA1 monoclonal antibody.



Western blot analysis using EphA1 monoclonal antibody against A549 (1) and HeLa (2) cell lysate.